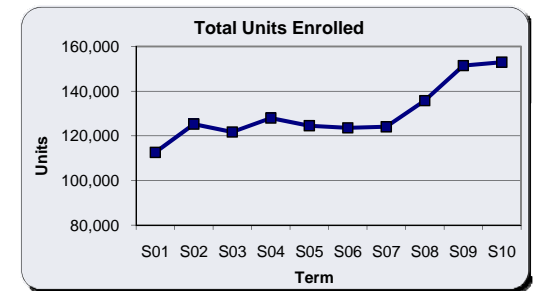
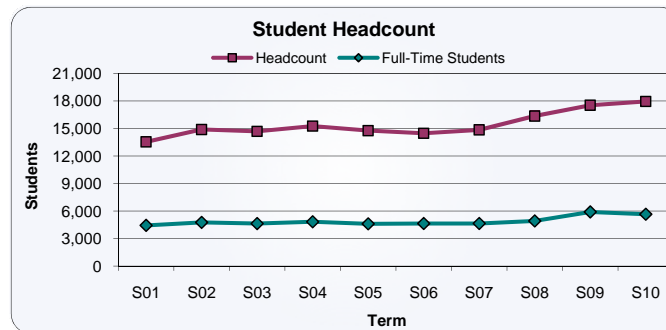
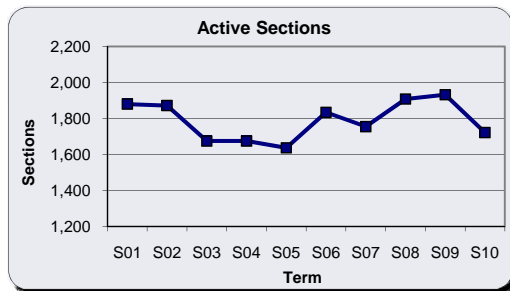


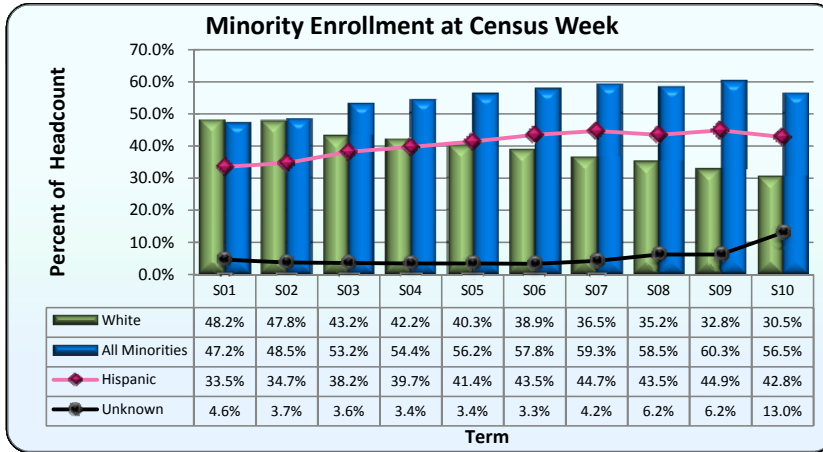
Bakersfield College
Census Week Enrollment (Headcount) Statistics - 10 Year Trend
 Spring 2001 through Spring 2010

Enrollment information was collected as of Friday of census week each semester.

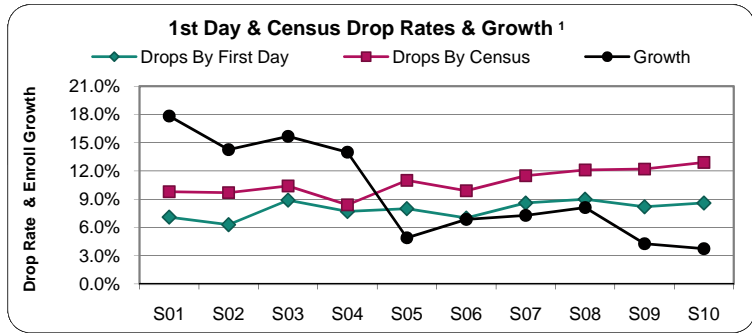
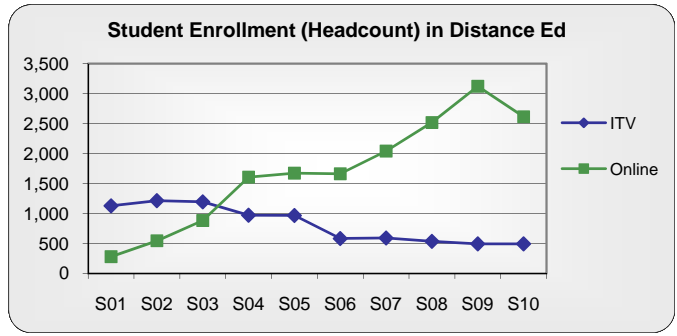
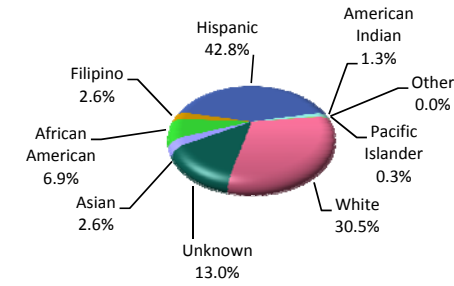
	Spring 2001	Spring 2002	Spring 2003	Spring 2004	Spring 2005	Spring 2006	Spring 2007	Spring 2008	Spring 2009	Spring 2010
		% change Prev Yr	% change Prev Yr	% change Prev Yr	% change Prev Yr	% change Prev Yr	% change Prev Yr	% change Prev Yr	% change Prev Yr	% change Prev Yr
Students Registered	15,024	16,498 9.8%	16,391 -0.6%	16,673 1.7%	16,602 -0.4%	16,085 -3.1%	16,783 4.3%	18,617 10.9%	19,972 7.3%	20,614 3.2%
Students Dropped	1,479	1,603 8.4%	1,703 6.2%	1,403 -17.6%	1,828 30.3%	1,600 -12.5%	1,927 20.4%	2,254 17.0%	2,429 7.8%	2,660 9.5%
Percent Dropped	9.8%	9.7%	10.4%	8.4%	11.0%	9.9%	11.5%	12.1%	12.2%	12.9%
Students Enrolled	13,545	14,895 10.0%	14,688 -1.4%	15,270 4.0%	14,774 -3.2%	14,485 -2.0%	14,856 2.6%	16,363 10.1%	17,543 7.2%	17,954 2.3%
Male	5,571	6,535 17.3%	6,046 -7.5%	6,460 6.8%	6,205 -3.9%	6,021 -3.0%	5,913 -1.8%	6,949 17.5%	7,310 5.2%	8,026 9.8%
Percent of All	41.1%	43.9%	41.2%	42.3%	42.0%	41.6%	39.8%	42.5%	41.7%	44.7%
Female	7,974	8,360 4.8%	8,642 3.4%	8,810 1.9%	8,569 -2.7%	8,464 -1.2%	8,943 5.7%	9,414 5.3%	10,194 8.3%	9,904 -2.8%
Percent of All	58.9%	56.1%	58.8%	57.7%	58.0%	58.4%	60.2%	57.5%	58.1%	55.2%
Day	10,582	11,352 7.3%	11,731 3.3%	12,221 4.2%	12,191 -0.2%	11,650 -4.4%	11,977 2.8%	13,366 11.6%	14,406 7.8%	15,293 6.2%
Percent of All	78.1%	76.2%	79.9%	80.0%	82.5%	80.4%	80.6%	81.7%	82.1%	85.2%
Evening	2,963	3,543 19.6%	2,957 -16.5%	3,049 3.1%	2,583 -15.3%	2,835 9.8%	2,879 1.6%	2,997 4.1%	3,137 4.7%	2,661 -15.2%
Percent of All	21.9%	23.8%	20.1%	20.0%	17.5%	19.6%	19.4%	18.3%	17.9%	14.8%
Full-time	4,438	4,759 7.2%	4,633 -2.6%	4,825 4.1%	4,603 -4.6%	4,640 0.8%	4,642 0.0%	4,920 6.0%	5,904 20.0%	5,650 -4.3%
Percent of All	32.8%	32.0%	31.5%	31.6%	31.2%	32.0%	31.2%	30.1%	33.7%	31.5%
Total Units Enrolled	112,579	125,253 11.3%	121,725 -2.8%	127,969 5.1%	124,527 -2.7%	123,586 -0.8%	124,053 0.4%	135,749 9.4%	151,438 11.6%	152,972 1.0%
Less than 21	5,204	5,667 8.9%	5,742 1.3%	5,710 -0.6%	5,808 1.7%	5,807 0.0%	6,007 3.4%	6,473 7.8%	7,022 8.5%	7,142 1.7%
Percent of All	38.4%	38.0%	39.1%	37.4%	39.3%	40.1%	40.4%	39.6%	40.0%	39.8%
Active Sections	1,880	1,872 -0.4%	1,675 -10.5%	1,675 0.0%	1,637 -2.3%	1,834 12.0%	1,755 -4.3%	1,908 8.7%	1,932 1.3%	1,722 -10.9%
Cancelled Sections*	88	103	191	92	93	98	177	142	131	112



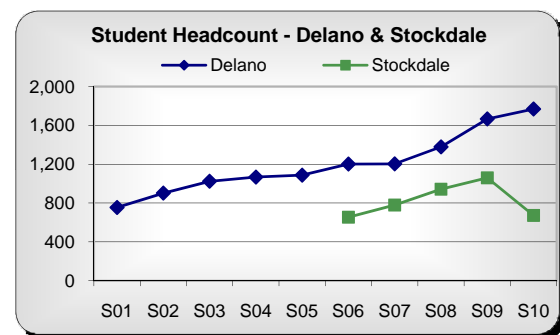
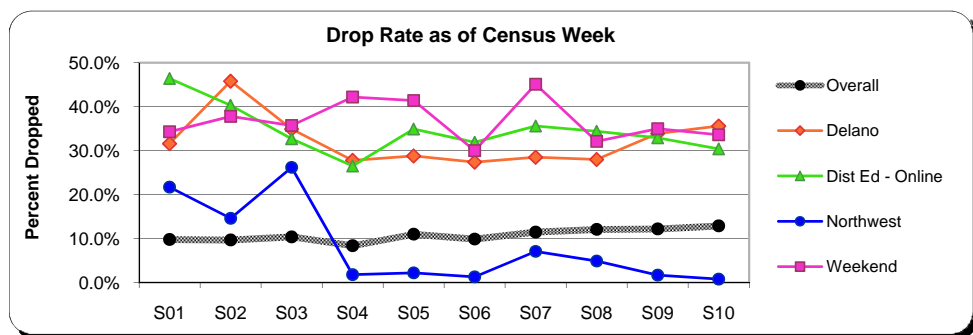
Bakersfield College
Census Week Enrollment (Headcount) Statistics - Points of Interest
 Spring 2001 through Spring 2010



Spring 2010 Ethnicity at Census Week



¹ Growth = Headcount Change from 1st Day to Census Week



Bakersfield College

Census Week Enrollment (Headcount) Statistics by Area / Type

Spring 2001 through Spring 2010

Enrollment information was collected as of Friday of census week each semester.

Figures for Total Headcount are unduplicated while figures for the areas are duplicated. For example, a student taking coursework at the Panorama Campus and at Delano would be counted in both areas but only once in the Total Headcount.

Area	Semester	Enrollment					Student Demographics												
		Registered	- Dropped (%)	= Enrolled	Units	% of All Units	Male	%	Female	%	Day	%	Evening	%	Fulltime	%	Less than 21 yrs old	%	
Total Headcount	Spring 2010	20,614	2,660	12.9%	17,954	152,972	8,026	44.7%	9,904	55.2%	15,293	85.2%	2,661	14.8%	5,650	31.5%	7,142	39.8%	
	Spring 2009	19,972	2,429	12.2%	17,543	151,438	7,310	41.7%	10,194	58.1%	14,406	82.1%	3,137	17.9%	5,904	33.7%	7,022	40.0%	
	Spring 2008	18,617	2,254	12.1%	16,363	135,749	6,949	42.5%	9,414	57.5%	13,366	81.7%	2,997	18.3%	4,920	30.1%	6,473	39.6%	
	Spring 2007	16,783	1,927	11.5%	14,856	124,053	5,913	39.8%	8,943	60.2%	11,977	80.6%	2,879	19.4%	4,642	31.2%	6,007	40.4%	
	Spring 2006	16,085	1,600	9.9%	14,485	123,586	6,021	41.6%	8,464	58.4%	11,650	80.4%	2,835	19.6%	4,640	32.0%	5,807	40.1%	
	Spring 2005	16,602	1,828	11.0%	14,774	124,527	6,205	42.0%	8,569	58.0%	12,191	82.5%	2,583	17.5%	4,603	31.2%	5,808	39.3%	
	Spring 2004	16,673	1,403	8.4%	15,270	127,969	6,460	42.3%	8,810	57.7%	12,221	80.0%	3,049	20.0%	4,825	31.6%	5,710	37.4%	
	Spring 2003	16,391	1,703	10.4%	14,688	121,725	6,046	41.2%	8,642	58.8%	11,731	79.9%	2,957	20.1%	4,633	31.5%	5,742	39.1%	
	Spring 2002	16,498	1,603	9.7%	14,895	125,253	6,535	43.9%	8,360	56.1%	11,352	76.2%	3,543	23.8%	4,759	32.0%	5,667	38.0%	
Spring 2001	15,024	1,479	9.8%	13,545	112,579	5,571	41.1%	7,974	58.9%	10,582	78.1%	2,963	21.9%	4,438	32.8%	5,204	38.4%		
Arvin-Lamont	Spring 2010	94	41	43.6%	53	162	0.1%	12	22.6%	41	77.4%	0	0.0%	53	100.0%	0	0.0%	26	49.1%
	Spring 2009	105	33	31.4%	72	273	0.2%	10	13.9%	61	84.7%	0	0.0%	72	100.0%	0	0.0%	23	31.9%
	Spring 2008	114	40	35.1%	74	273	0.2%	13	17.6%	61	82.4%	0	0.0%	74	100.0%	0	0.0%	30	40.5%
	Spring 2007	106	39	36.8%	67	168	0.1%	10	14.9%	57	85.1%	0	0.0%	67	100.0%	0	0.0%	27	40.3%
	Spring 2006	153	49	32.0%	104	325	0.3%	6	5.8%	98	94.2%	0	0.0%	104	100.0%	0	0.0%	12	11.5%
	Spring 2005	165	42	25.5%	123	464	0.4%	19	15.4%	104	84.6%	0	0.0%	123	100.0%	0	0.0%	21	17.1%
	Spring 2004	94	13	13.8%	81	321	0.3%	3	3.7%	78	96.3%	0	0.0%	81	100.0%	0	0.0%	4	4.9%
	Spring 2003	60	2	3.3%	58	145	0.1%	5	8.6%	53	91.4%	0	0.0%	58	100.0%	0	0.0%	8	13.8%
	Spring 2002	25	1	4.0%	24	72	0.1%	24	100.0%	0	0.0%	24	100.0%	0	0.0%	0	0.0%	1	4.2%
Spring 2001	0	0	0.0%	0	0	0.0%	0	0.0%	0	0.0%	0	0.0%	0	0.0%	0	0.0%	0	0.0%	
Bakersfield Area	Spring 2010	1,480	151	10.2%	1,329	1,848	1.2%	528	39.7%	799	60.1%	1,287	96.8%	42	3.2%	0	0.0%	484	36.4%
	Spring 2009	1,782	207	11.6%	1,575	2,739	1.8%	618	39.2%	948	60.2%	1,530	97.1%	45	2.9%	18	1.1%	591	37.5%
	Spring 2008	1,496	289	19.3%	1,207	2,977	2.2%	435	36.0%	772	64.0%	1,169	96.9%	38	3.1%	0	0.0%	387	32.1%
	Spring 2007	1,598	195	12.2%	1,403	3,628	2.9%	436	31.1%	967	68.9%	1,382	98.5%	21	1.5%	0	0.0%	411	29.3%
	Spring 2006	1,243	140	11.3%	1,103	3,930	3.2%	401	36.4%	702	63.6%	1,053	95.5%	50	4.5%	52	4.7%	321	29.1%
	Spring 2005	1,918	227	11.8%	1,691	3,154	2.5%	623	36.8%	1,068	63.2%	1,610	95.2%	81	4.8%	29	1.7%	582	34.4%
	Spring 2004	1,526	177	11.6%	1,349	7,687	6.0%	768	56.9%	581	43.1%	1,247	92.4%	102	7.6%	23	1.7%	192	14.2%
	Spring 2003	1,050	132	12.6%	918	3,893	3.2%	354	38.6%	564	61.4%	734	80.0%	184	20.0%	41	4.5%	176	19.2%
	Spring 2002	1,469	267	18.2%	1,202	5,049	4.0%	583	48.5%	619	51.5%	1,000	83.2%	202	16.8%	17	1.4%	278	23.1%
Spring 2001	1,036	121	11.7%	915	4,200	3.7%	428	46.8%	487	53.2%	824	90.1%	91	9.9%	40	4.4%	211	23.1%	
Delano	Spring 2010	2,746	978	35.6%	1,768	12,221	8.0%	653	36.9%	1,112	62.9%	1,147	64.9%	621	35.1%	341	19.3%	876	49.5%
	Spring 2009	2,521	855	33.9%	1,666	11,248	7.4%	559	33.6%	1,101	66.1%	1,000	60.0%	666	40.0%	319	19.1%	817	49.0%
	Spring 2008	1,914	536	28.0%	1,378	9,372	6.9%	444	32.2%	934	67.8%	822	59.7%	556	40.3%	248	18.0%	703	51.0%
	Spring 2007	1,683	480	28.5%	1,203	8,138	6.6%	336	27.9%	867	72.1%	660	54.9%	543	45.1%	208	17.3%	585	48.6%
	Spring 2006	1,655	454	27.4%	1,201	7,869	6.4%	342	28.5%	859	71.5%	619	51.5%	582	48.5%	204	17.0%	575	47.9%
	Spring 2005	1,526	439	28.8%	1,087	6,962	5.6%	309	28.4%	778	71.6%	569	52.3%	518	47.7%	141	13.0%	506	46.6%
	Spring 2004	1,477	410	27.8%	1,067	7,019	5.5%	331	31.0%	736	69.0%	578	54.2%	489	45.8%	143	13.4%	512	48.0%
	Spring 2003	1,573	549	34.9%	1,024	6,466	5.3%	324	31.6%	700	68.4%	487	47.6%	537	52.4%	131	12.8%	491	47.9%
	Spring 2002	1,665	763	45.8%	902	5,857	4.7%	275	30.5%	627	69.5%	502	55.7%	400	44.3%	126	14.0%	377	41.8%
Spring 2001	1,103	349	31.6%	754	4,275	3.8%	239	31.7%	515	68.3%	315	41.8%	439	58.2%	64	8.5%	322	42.7%	

Area	Semester	Enrollment					Student Demographics												
		Registered - Dropped (%) =			Enrolled	Units	% of All Units	Male	%	Female	%	Day	%	Evening	%	Fulltime	%	Less than 21 yrs old	%
Dist Ed - ITV	Spring 2010	771	276	35.8%	495	1,752	1.1%	190	38.4%	304	61.4%	495	100.0%	0	0.0%	0	0.0%	156	31.5%
	Spring 2009	750	255	34.0%	495	1,875	1.2%	141	28.5%	354	71.5%	495	100.0%	0	0.0%	5	1.0%	149	30.1%
	Spring 2008	771	234	30.4%	537	1,998	1.5%	148	27.6%	389	72.4%	537	100.0%	0	0.0%	3	0.6%	148	27.6%
	Spring 2007	818	225	27.5%	593	2,205	1.8%	184	31.0%	409	69.0%	593	100.0%	0	0.0%	6	1.0%	179	30.2%
	Spring 2006	820	236	28.8%	584	2,211	1.8%	158	27.1%	426	72.9%	581	99.5%	3	0.5%	7	1.2%	179	30.7%
	Spring 2005	1,321	353	26.7%	968	3,660	2.9%	268	27.7%	700	72.3%	960	99.2%	8	0.8%	13	1.3%	297	30.7%
	Spring 2004	1,375	402	29.2%	973	3,681	2.9%	273	28.1%	700	71.9%	973	100.0%	0	0.0%	16	1.6%	287	29.5%
	Spring 2003	1,652	456	27.6%	1,196	4,564	3.7%	332	27.8%	864	72.2%	1,196	100.0%	0	0.0%	9	0.8%	366	30.6%
	Spring 2002	1,651	435	26.3%	1,216	4,762	3.8%	326	26.8%	890	73.2%	1,216	100.0%	0	0.0%	10	0.8%	411	33.8%
Spring 2001	1,512	382	25.3%	1,130	4,476	4.0%	307	27.2%	823	72.8%	1,130	100.0%	0	0.0%	23	2.0%	343	30.4%	
Dist Ed - Online	Spring 2010	3,758	1,143	30.4%	2,615	12,129	7.9%	900	34.4%	1,714	65.5%	2,606	99.7%	9	0.3%	81	3.1%	820	31.4%
	Spring 2009	4,655	1,532	32.9%	3,123	14,613	9.6%	1,015	32.5%	2,100	67.2%	2,958	94.7%	165	5.3%	80	2.6%	978	31.3%
	Spring 2008	3,838	1,319	34.4%	2,519	10,466	7.7%	792	31.4%	1,727	68.6%	2,343	93.0%	176	7.0%	54	2.1%	820	32.6%
	Spring 2007	3,172	1,129	35.6%	2,043	8,386	6.8%	607	29.7%	1,436	70.3%	1,849	90.5%	194	9.5%	29	1.4%	678	33.2%
	Spring 2006	2,442	778	31.9%	1,664	6,697	5.4%	489	29.4%	1,175	70.6%	1,430	85.9%	234	14.1%	20	1.2%	523	31.4%
	Spring 2005	2,572	898	34.9%	1,674	6,087	4.9%	522	31.2%	1,152	68.8%	1,674	100.0%	0	0.0%	14	0.8%	520	31.1%
	Spring 2004	2,185	578	26.5%	1,607	6,120	4.8%	489	30.4%	1,118	69.6%	1,607	100.0%	0	0.0%	11	0.7%	455	28.3%
	Spring 2003	1,314	430	32.7%	884	3,409	2.8%	264	29.9%	620	70.1%	884	100.0%	0	0.0%	7	0.8%	244	27.6%
	Spring 2002	915	369	40.3%	546	2,187	1.7%	201	36.8%	345	63.2%	531	97.3%	15	2.7%	7	1.3%	175	32.1%
Spring 2001	524	243	46.4%	281	1,087	1.0%	106	37.7%	175	62.3%	281	100.0%	0	0.0%	0	0.0%	87	31.0%	
Northwest	Spring 2010	659	5	0.8%	654	4,868	3.2%	651	99.5%	3	0.5%	625	95.6%	29	4.4%	0	0.0%	17	2.6%
	Spring 2009	121	2	1.7%	119	596	0.4%	118	99.2%	1	0.8%	52	43.7%	67	56.3%	0	0.0%	27	22.7%
	Spring 2008	566	28	4.9%	538	3,894	2.9%	534	99.3%	4	0.7%	453	84.2%	85	15.8%	1	0.2%	49	9.1%
	Spring 2007	255	18	7.1%	237	506	0.4%	229	96.6%	8	3.4%	153	64.6%	84	35.4%	0	0.0%	38	16.0%
	Spring 2006	680	9	1.3%	671	4,736	3.8%	643	95.8%	28	4.2%	592	88.2%	79	11.8%	0	0.0%	42	6.3%
	Spring 2005	624	14	2.2%	610	4,367	3.5%	599	98.2%	11	1.8%	572	93.8%	38	6.2%	2	0.3%	29	4.8%
	Spring 2004	327	6	1.8%	321	843	0.7%	303	94.4%	18	5.6%	215	67.0%	106	33.0%	1	0.3%	40	12.5%
	Spring 2003	516	135	26.2%	381	1,302	1.1%	208	54.6%	173	45.4%	72	18.9%	309	81.1%	0	0.0%	130	34.1%
	Spring 2002	1,336	195	14.6%	1,141	6,575	5.2%	873	76.5%	268	23.5%	235	20.6%	906	79.4%	3	0.3%	185	16.2%
Spring 2001	683	148	21.7%	535	1,694	1.5%	352	65.8%	183	34.2%	129	24.1%	406	75.9%	0	0.0%	160	29.9%	
Panorama Campus	Spring 2010	16,629	2,445	14.7%	14,184	115,243	75.3%	6,291	44.4%	7,875	55.5%	11,656	82.2%	2,528	17.8%	3,852	27.2%	6,155	43.4%
	Spring 2009	16,328	2,316	14.2%	14,012	114,159	75.4%	6,102	43.5%	7,886	56.3%	11,258	80.3%	2,754	19.7%	3,889	27.8%	6,013	42.9%
	Spring 2008	14,876	2,109	14.2%	12,767	101,017	74.4%	5,456	42.7%	7,311	57.3%	10,156	79.5%	2,611	20.5%	3,324	26.0%	5,557	43.5%
	Spring 2007	13,900	1,883	13.5%	12,017	96,358	77.7%	5,007	41.7%	7,010	58.3%	9,497	79.0%	2,520	21.0%	3,178	26.4%	5,289	44.0%
	Spring 2006	13,072	1,578	12.1%	11,494	93,011	75.3%	4,793	41.7%	6,701	58.3%	9,139	79.5%	2,355	20.5%	3,188	27.7%	5,154	44.8%
	Spring 2005	14,182	1,934	13.6%	12,248	98,621	79.2%	5,129	41.9%	7,119	58.1%	9,526	77.8%	2,722	22.2%	3,315	27.1%	5,291	43.2%
	Spring 2004	13,761	1,462	10.6%	12,299	99,631	77.9%	5,153	41.9%	7,146	58.1%	9,407	76.5%	2,892	23.5%	3,531	28.7%	5,143	41.8%
	Spring 2003	13,876	1,640	11.8%	12,236	97,289	79.9%	5,207	42.6%	7,029	57.4%	9,764	79.8%	2,472	20.2%	3,381	27.6%	5,212	42.6%
	Spring 2002	13,272	1,549	11.7%	11,723	95,112	75.9%	4,979	42.5%	6,744	57.5%	9,254	78.9%	2,469	21.1%	3,456	29.5%	5,133	43.8%
Spring 2001	12,614	1,386	11.0%	11,228	91,378	81.2%	4,630	41.2%	6,598	58.8%	8,915	79.4%	2,313	20.6%	3,369	30.0%	4,755	42.3%	
Shafter-Westec	Spring 2010	171	0	0.0%	171	282	0.2%	122	71.3%	46	26.9%	158	92.4%	13	7.6%	0	0.0%	14	8.2%
	Spring 2009	0	0	0.0%	0	0	0.0%	0	0.0%	0	0.0%	0	0.0%	0	0.0%	0	0.0%	0	0.0%
	Spring 2008	116	2	1.7%	114	479	0.4%	80	70.2%	34	29.8%	97	85.1%	17	14.9%	0	0.0%	10	8.8%
	Spring 2007	7	2	28.6%	5	3	0.0%	4	80.0%	1	20.0%	3	60.0%	2	40.0%	0	0.0%	1	20.0%
	New Spr 2007																		

Area	Semester	Enrollment						Student Demographics											
		Registered - Dropped (%) = Enrolled			Units	% of All Units		Male	%	Female	%	Day	%	Evening	%	Fulltime	%	Less than 21 yrs old	%
Southwest	N/A																		
	Spring 2005	98	50	51.0%	48	175	0.1%	22	45.8%	26	54.2%	31	64.6%	17	35.4%	0	0.0%	29	60.4%
	Spring 2004	0	0	0.0%	0	0	0.0%	0	0.0%	0	0.0%	0	0.0%	0	0.0%	0	0.0%	0	0.0%
	Spring 2003	802	300	37.4%	502	1,574	1.3%	158	31.5%	344	68.5%	0	0.0%	502	100.0%	0	0.0%	169	33.7%
	Spring 2002	961	262	27.3%	699	2,195	1.8%	227	32.5%	472	67.5%	0	0.0%	699	100.0%	0	0.0%	229	32.8%
	Spring 2001	1,035	280	27.1%	755	2,425	2.2%	214	28.3%	541	71.7%	0	0.0%	755	100.0%	0	0.0%	241	31.9%
Stockdale	Spring 2010	1,020	348	34.1%	672	2,059	1.3%	216	32.1%	455	67.7%	0	0.0%	672	100.0%	0	0.0%	256	38.1%
	Spring 2009	1,607	547	34.0%	1,060	3,685	2.4%	326	30.8%	730	68.9%	0	0.0%	1,060	100.0%	0	0.0%	344	32.5%
	Spring 2008	1,399	457	32.7%	942	3,225	2.4%	286	30.4%	656	69.6%	0	0.0%	942	100.0%	0	0.0%	311	33.0%
	Spring 2007	1,173	394	33.6%	779	2,635	2.1%	239	30.7%	540	69.3%	0	0.0%	779	100.0%	0	0.0%	249	32.0%
	Spring 2006	1,044	390	37.4%	654	2,323	1.9%	187	28.6%	467	71.4%	0	0.0%	654	100.0%	0	0.0%	210	32.1%
	New Fall 2005																		
Tehachapi	N/A																		
	Spring 2004	84	30	35.7%	54	177	0.1%	17	31.5%	37	68.5%	4	7.4%	50	92.6%	0	0.0%	31	57.4%
	Spring 2003	197	124	62.9%	73	270	0.2%	27	37.0%	46	63.0%	0	0.0%	73	100.0%	0	0.0%	33	45.2%
	Spring 2002	359	185	51.5%	174	722	0.6%	55	31.6%	119	68.4%	0	0.0%	174	100.0%	0	0.0%	73	42.0%
	Spring 2001	309	111	35.9%	198	650	0.6%	77	38.9%	121	61.1%	0	0.0%	198	100.0%	0	0.0%	86	43.4%
Weekend	Spring 2010	735	247	33.6%	488	1,093	0.7%	178	36.5%	310	63.5%	488	100.0%	0	0.0%	0	0.0%	190	38.9%
	Spring 2009	668	234	35.0%	434	883	0.6%	146	33.6%	287	66.1%	434	100.0%	0	0.0%	0	0.0%	154	35.5%
	Spring 2008	731	235	32.1%	496	821	0.6%	167	33.7%	329	66.3%	496	100.0%	0	0.0%	0	0.0%	154	31.0%
	Spring 2007	672	303	45.1%	369	864	0.7%	98	26.6%	271	73.4%	369	100.0%	0	0.0%	0	0.0%	100	27.1%
	Spring 2006	553	166	30.0%	387	1,064	0.9%	140	36.2%	247	63.8%	387	100.0%	0	0.0%	0	0.0%	119	30.7%
	Spring 2005	614	254	41.4%	360	1,039	0.8%	106	29.4%	254	70.6%	360	100.0%	0	0.0%	0	0.0%	102	28.3%
	Spring 2004	704	297	42.2%	407	1,125	0.9%	141	34.6%	266	65.4%	407	100.0%	0	0.0%	0	0.0%	126	31.0%
	Spring 2003	717	256	35.7%	461	1,256	1.0%	160	34.7%	301	65.3%	461	100.0%	0	0.0%	0	0.0%	144	31.2%
	Spring 2002	842	318	37.8%	524	1,357	1.1%	152	29.0%	372	71.0%	524	100.0%	0	0.0%	0	0.0%	150	28.6%
	Spring 2001	817	280	34.3%	537	1,100	1.0%	119	22.2%	418	77.8%	491	91.4%	46	8.6%	0	0.0%	87	16.2%
Weill	Spring 2010	541	162	29.9%	379	1,317	0.9%	197	52.0%	181	47.8%	134	35.4%	245	64.6%	1	0.3%	113	29.8%
	Spring 2009	681	237	34.8%	444	1,368	0.9%	249	56.1%	193	43.5%	168	37.8%	276	62.2%	4	0.9%	140	31.5%
	Spring 2008	580	186	32.1%	394	1,230	0.9%	265	67.3%	129	32.7%	182	46.2%	212	53.8%	0	0.0%	122	31.0%
	Spring 2007	453	99	21.9%	354	1,164	0.9%	221	62.4%	133	37.6%	178	50.3%	176	49.7%	0	0.0%	112	31.6%
	Spring 2006	613	211	34.4%	402	1,422	1.2%	127	31.6%	275	68.4%	154	38.3%	248	61.7%	1	0.2%	89	22.1%
	Spring 2005	0	0	0.0%	0	0	0.0%	0	0.0%	0	0.0%	0	0.0%	0	0.0%	0	0.0%	0	0.0%
	Spring 2004	620	189	30.5%	431	1,367	1.1%	151	35.0%	280	65.0%	36	8.4%	395	91.6%	3	0.7%	78	18.1%
	Spring 2003	720	197	27.4%	523	1,560	1.3%	161	30.8%	362	69.2%	43	8.2%	480	91.8%	0	0.0%	111	21.2%
	Spring 2002	627	185	29.5%	442	1,366	1.1%	136	30.8%	306	69.2%	38	8.6%	404	91.4%	0	0.0%	69	15.6%
	Spring 2001	662	221	33.4%	441	1,295	1.1%	152	34.5%	289	65.5%	18	4.1%	423	95.9%	0	0.0%	82	18.6%

Bakersfield College

Census Week Enrollment (Headcount) Statistics by Area / Type

Spring 2001 through Spring 2010

Enrollment information was collected as of Friday of census week each semester.

Figures for Total Headcount are unduplicated while figures for the areas are duplicated. For example, a student taking coursework at the Panorama Campus and at Delano would be counted in both areas but only once in the Total Headcount.

Area	Semester	Student Demographics - Ethnicity																Total		
		Asian	%	African	%	Filipino	%	Hispanic	%	American	%	Other	%	Pacific	%	White	%		Unknown	%
Total Headcount	Spring 2010	468	2.6%	1,230	6.9%	462	2.6%	7,685	42.8%	240	1.3%	2	0.0%	50	0.3%	5,475	30.5%	2,342	13.0%	17,954
	Spring 2009	540	3.1%	1,328	7.6%	504	2.9%	7,870	44.9%	255	1.5%	5	0.0%	52	0.3%	5,747	32.8%	1,242	7.1%	17,543
	Spring 2008	472	2.9%	1,140	7.0%	522	3.2%	7,126	43.5%	254	1.6%	3	0.0%	57	0.3%	5,767	35.2%	1,022	6.2%	16,363
	Spring 2007	449	3.0%	947	6.4%	497	3.3%	6,636	44.7%	227	1.5%	4	0.0%	50	0.3%	5,423	36.5%	623	4.2%	14,856
	Spring 2006	407	2.8%	934	6.4%	442	3.1%	6,307	43.5%	230	1.6%	8	0.1%	44	0.3%	5,628	38.9%	485	3.3%	14,485
	Spring 2005	453	3.1%	1,026	6.9%	441	3.0%	6,121	41.4%	226	1.5%	6	0.0%	44	0.3%	5,958	40.3%	499	3.4%	14,774
	Spring 2004	472	3.1%	1,085	7.1%	410	2.7%	6,060	39.7%	232	1.5%	6	0.0%	43	0.3%	6,443	42.2%	519	3.4%	15,270
	Spring 2003	480	3.3%	1,088	7.4%	369	2.5%	5,609	38.2%	240	1.6%	4	0.0%	32	0.2%	6,341	43.2%	525	3.6%	14,688
	Spring 2002	430	2.9%	1,003	6.7%	329	2.2%	5,170	34.7%	270	1.8%	5	0.0%	25	0.2%	7,115	47.8%	548	3.7%	14,895
Spring 2001	428	3.2%	875	6.5%	279	2.1%	4,544	33.5%	240	1.8%	2	0.0%	20	0.1%	6,533	48.2%	624	4.6%	13,545	
Arvin-Lamont	Spring 2010	0	0.0%	1	1.9%	1	1.9%	42	79.2%	0	0.0%	0	0.0%	0	0.0%	3	5.7%	6	11.3%	53
	Spring 2009	2	2.8%	2	2.8%	0	0.0%	63	87.5%	1	1.4%	0	0.0%	0	0.0%	1	1.4%	3	4.2%	72
	Spring 2008	1	1.4%	2	2.7%	0	0.0%	65	87.8%	0	0.0%	0	0.0%	0	0.0%	1	1.4%	5	6.8%	74
	Spring 2007	0	0.0%	1	1.5%	1	1.5%	62	92.5%	0	0.0%	0	0.0%	0	0.0%	1	1.5%	2	3.0%	67
	Spring 2006	1	1.0%	3	2.9%	1	1.0%	86	82.7%	0	0.0%	0	0.0%	0	0.0%	11	10.6%	2	1.9%	104
	Spring 2005	0	0.0%	1	0.8%	0	0.0%	108	87.8%	2	1.6%	0	0.0%	0	0.0%	12	9.8%	0	0.0%	123
	Spring 2004	0	0.0%	0	0.0%	0	0.0%	67	82.7%	2	2.5%	0	0.0%	0	0.0%	11	13.6%	1	1.2%	81
	Spring 2003	1	1.7%	0	0.0%	0	0.0%	51	87.9%	2	3.4%	0	0.0%	0	0.0%	4	6.9%	0	0.0%	58
	Spring 2002	1	4.2%	5	20.8%	1	4.2%	8	33.3%	0	0.0%	0	0.0%	0	0.0%	9	37.5%	0	0.0%	24
Spring 2001	0	0.0%	0	0.0%	0	0.0%	0	0.0%	0	0.0%	0	0.0%	0	0.0%	0	0.0%	0	0.0%	0	
Bakersfield Area	Spring 2010	34	2.6%	136	10.2%	14	1.1%	535	40.3%	25	1.9%	1	0.1%	4	0.3%	390	29.3%	190	14.3%	1,329
	Spring 2009	75	4.8%	176	11.2%	52	3.3%	662	42.0%	40	2.5%	1	0.1%	6	0.4%	447	28.4%	116	7.4%	1,575
	Spring 2008	47	3.9%	111	9.2%	46	3.8%	481	39.9%	25	2.1%	3	0.2%	8	0.7%	437	36.2%	49	4.1%	1,207
	Spring 2007	51	3.6%	115	8.2%	68	4.8%	555	39.6%	30	2.1%	1	0.1%	3	0.2%	526	37.5%	54	3.8%	1,403
	Spring 2006	27	2.4%	81	7.3%	45	4.1%	410	37.2%	18	1.6%	2	0.2%	0	0.0%	487	44.2%	33	3.0%	1,103
	Spring 2005	58	3.4%	160	9.5%	56	3.3%	722	42.7%	34	2.0%	0	0.0%	4	0.2%	616	36.4%	41	2.4%	1,691
	Spring 2004	30	2.2%	102	7.6%	34	2.5%	360	26.7%	28	2.1%	1	0.1%	5	0.4%	736	54.6%	53	3.9%	1,349
	Spring 2003	27	2.9%	70	7.6%	21	2.3%	285	31.0%	17	1.9%	2	0.2%	4	0.4%	461	50.2%	31	3.4%	918
	Spring 2002	32	2.7%	125	10.4%	30	2.5%	314	26.1%	28	2.3%	0	0.0%	1	0.1%	626	52.1%	46	3.8%	1,202
Spring 2001	29	3.2%	76	8.3%	9	1.0%	260	28.4%	19	2.1%	0	0.0%	3	0.3%	481	52.6%	38	4.2%	915	
Delano	Spring 2010	27	1.5%	23	1.3%	179	10.1%	1,245	70.4%	4	0.2%	0	0.0%	6	0.3%	92	5.2%	192	10.9%	1,768
	Spring 2009	23	1.4%	24	1.4%	176	10.6%	1,242	74.5%	6	0.4%	0	0.0%	1	0.1%	71	4.3%	123	7.4%	1,666
	Spring 2008	12	0.9%	29	2.1%	172	12.5%	1,019	73.9%	5	0.4%	0	0.0%	5	0.4%	51	3.7%	85	6.2%	1,378
	Spring 2007	12	1.0%	18	1.5%	161	13.4%	916	76.1%	7	0.6%	0	0.0%	4	0.3%	54	4.5%	31	2.6%	1,203
	Spring 2006	14	1.2%	21	1.7%	194	16.2%	887	73.9%	6	0.5%	0	0.0%	3	0.2%	57	4.7%	19	1.6%	1,201
	Spring 2005	18	1.7%	15	1.4%	167	15.4%	805	74.1%	2	0.2%	1	0.1%	1	0.1%	57	5.2%	21	1.9%	1,087
	Spring 2004	20	1.9%	14	1.3%	163	15.3%	765	71.7%	2	0.2%	0	0.0%	1	0.1%	79	7.4%	23	2.2%	1,067
	Spring 2003	14	1.4%	22	2.1%	123	12.0%	754	73.6%	3	0.3%	0	0.0%	1	0.1%	78	7.6%	29	2.8%	1,024
	Spring 2002	13	1.4%	22	2.4%	98	10.9%	639	70.8%	5	0.6%	0	0.0%	1	0.1%	87	9.6%	37	4.1%	902
Spring 2001	13	1.7%	18	2.4%	86	11.4%	524	69.5%	5	0.7%	0	0.0%	0	0.0%	63	8.4%	45	6.0%	754	

Area	Semester	Student Demographics - Ethnicity																		Total
		Asian	%	African	%	Filipino	%	Hispanic	%	American	%	Other	%	Pacific	%	White	%	Unknown	%	
Dist Ed - ITV	Spring 2010	16	3.2%	48	9.7%	4	0.8%	151	30.5%	6	1.2%	0	0.0%	2	0.4%	204	41.2%	64	12.9%	495
	Spring 2009	19	3.8%	60	12.1%	6	1.2%	160	32.3%	9	1.8%	0	0.0%	2	0.4%	206	41.6%	33	6.7%	495
	Spring 2008	14	2.6%	55	10.2%	15	2.8%	169	31.5%	11	2.0%	0	0.0%	1	0.2%	230	42.8%	42	7.8%	537
	Spring 2007	12	2.0%	40	6.7%	14	2.4%	198	33.4%	10	1.7%	0	0.0%	1	0.2%	288	48.6%	30	5.1%	593
	Spring 2006	8	1.4%	53	9.1%	10	1.7%	180	30.8%	15	2.6%	0	0.0%	0	0.0%	291	49.8%	27	4.6%	584
	Spring 2005	20	2.1%	84	8.7%	19	2.0%	329	34.0%	17	1.8%	0	0.0%	3	0.3%	458	47.3%	38	3.9%	968
	Spring 2004	23	2.4%	92	9.5%	12	1.2%	274	28.2%	19	2.0%	0	0.0%	4	0.4%	504	51.8%	45	4.6%	973
	Spring 2003	20	1.7%	97	8.1%	23	1.9%	343	28.7%	14	1.2%	0	0.0%	3	0.3%	647	54.1%	49	4.1%	1,196
	Spring 2002	19	1.6%	83	6.8%	11	0.9%	326	26.8%	24	2.0%	0	0.0%	6	0.5%	697	57.3%	50	4.1%	1,216
Spring 2001	13	1.2%	81	7.2%	11	1.0%	293	25.9%	21	1.9%	0	0.0%	0	0.0%	663	58.7%	48	4.2%	1,130	
Dist Ed - Online	Spring 2010	61	2.3%	173	6.6%	44	1.7%	876	33.5%	30	1.1%	0	0.0%	3	0.1%	1,118	42.8%	310	11.9%	2,615
	Spring 2009	100	3.2%	244	7.8%	72	2.3%	1,061	34.0%	45	1.4%	0	0.0%	15	0.5%	1,372	43.9%	214	6.9%	3,123
	Spring 2008	79	3.1%	167	6.6%	61	2.4%	849	33.7%	37	1.5%	1	0.0%	8	0.3%	1,175	46.6%	142	5.6%	2,519
	Spring 2007	55	2.7%	114	5.6%	38	1.9%	690	33.8%	40	2.0%	4	0.2%	3	0.1%	996	48.8%	103	5.0%	2,043
	Spring 2006	32	1.9%	97	5.8%	33	2.0%	555	33.4%	25	1.5%	2	0.1%	6	0.4%	850	51.1%	64	3.8%	1,664
	Spring 2005	48	2.9%	128	7.6%	39	2.3%	503	30.0%	34	2.0%	1	0.1%	2	0.1%	843	50.4%	76	4.5%	1,674
	Spring 2004	23	1.4%	126	7.8%	33	2.1%	482	30.0%	23	1.4%	1	0.1%	4	0.2%	862	53.6%	53	3.3%	1,607
	Spring 2003	27	3.1%	59	6.7%	14	1.6%	215	24.3%	12	1.4%	0	0.0%	2	0.2%	507	57.4%	48	5.4%	884
	Spring 2002	16	2.9%	22	4.0%	7	1.3%	102	18.7%	7	1.3%	0	0.0%	1	0.2%	358	65.6%	33	6.0%	546
Spring 2001	13	4.6%	10	3.6%	3	1.1%	51	18.1%	4	1.4%	0	0.0%	0	0.0%	188	66.9%	12	4.3%	281	
Northwest	Spring 2010	4	0.6%	20	3.1%	2	0.3%	103	15.7%	13	2.0%	0	0.0%	2	0.3%	473	72.3%	37	5.7%	654
	Spring 2009	1	0.8%	2	1.7%	0	0.0%	30	25.2%	5	4.2%	0	0.0%	0	0.0%	72	60.5%	9	7.6%	119
	Spring 2008	2	0.4%	14	2.6%	2	0.4%	92	17.1%	13	2.4%	0	0.0%	1	0.2%	387	71.9%	27	5.0%	538
	Spring 2007	2	0.8%	5	2.1%	2	0.8%	38	16.0%	14	5.9%	0	0.0%	0	0.0%	169	71.3%	7	3.0%	237
	Spring 2006	5	0.7%	21	3.1%	4	0.6%	108	16.1%	17	2.5%	0	0.0%	2	0.3%	489	72.9%	25	3.7%	671
	Spring 2005	4	0.7%	21	3.4%	3	0.5%	104	17.0%	13	2.1%	0	0.0%	2	0.3%	444	72.8%	19	3.1%	610
	Spring 2004	2	0.6%	10	3.1%	0	0.0%	52	16.2%	7	2.2%	0	0.0%	0	0.0%	242	75.4%	8	2.5%	321
	Spring 2003	9	2.4%	10	2.6%	3	0.8%	97	25.5%	5	1.3%	0	0.0%	1	0.3%	238	62.5%	18	4.7%	381
	Spring 2002	10	0.9%	46	4.0%	5	0.4%	212	18.6%	33	2.9%	1	0.1%	4	0.4%	791	69.3%	39	3.4%	1,141
Spring 2001	7	1.3%	18	3.4%	6	1.1%	108	20.2%	5	0.9%	0	0.0%	1	0.2%	374	69.9%	16	3.0%	535	
Panorama Campus	Spring 2010	409	2.9%	1,065	7.5%	316	2.2%	6,003	42.3%	199	1.4%	2	0.0%	41	0.3%	4,229	29.8%	1,920	13.5%	14,184
	Spring 2009	458	3.3%	1,110	7.9%	340	2.4%	6,187	44.2%	202	1.4%	5	0.0%	47	0.3%	4,682	33.4%	981	7.0%	14,012
	Spring 2008	403	3.2%	955	7.5%	368	2.9%	5,515	43.2%	210	1.6%	3	0.0%	45	0.4%	4,451	34.9%	817	6.4%	12,767
	Spring 2007	395	3.3%	828	6.9%	364	3.0%	5,247	43.7%	183	1.5%	2	0.0%	45	0.4%	4,443	37.0%	510	4.2%	12,017
	Spring 2006	368	3.2%	800	7.0%	295	2.6%	4,978	43.3%	192	1.7%	7	0.1%	34	0.3%	4,420	38.5%	400	3.5%	11,494
	Spring 2005	407	3.3%	914	7.5%	311	2.5%	5,021	41.0%	194	1.6%	5	0.0%	40	0.3%	4,935	40.3%	421	3.4%	12,248
	Spring 2004	440	3.6%	937	7.6%	281	2.3%	4,862	39.5%	187	1.5%	5	0.0%	37	0.3%	5,122	41.6%	428	3.5%	12,299
	Spring 2003	442	3.6%	964	7.9%	270	2.2%	4,516	36.9%	202	1.7%	3	0.0%	29	0.2%	5,372	43.9%	438	3.6%	12,236
	Spring 2002	381	3.3%	826	7.0%	227	1.9%	4,076	34.8%	204	1.7%	2	0.0%	19	0.2%	5,549	47.3%	439	3.7%	11,723
Spring 2001	393	3.5%	740	6.6%	211	1.9%	3,719	33.1%	204	1.8%	2	0.0%	15	0.1%	5,396	48.1%	548	4.9%	11,228	
Shafter-Westec	Spring 2010	1	0.6%	14	8.2%	3	1.8%	54	31.6%	6	3.5%	0	0.0%	1	0.6%	69	40.4%	23	13.5%	171
	Spring 2009	0	0.0%	0	0.0%	0	0.0%	0	0.0%	0	0.0%	0	0.0%	0	0.0%	0	0.0%	0	0.0%	0
	Spring 2008	1	0.9%	9	7.9%	7	6.1%	38	33.3%	1	0.9%	0	0.0%	0	0.0%	49	43.0%	9	7.9%	114
	Spring 2007	0	0.0%	1	20.0%	0	0.0%	1	20.0%	1	20.0%	0	0.0%	0	0.0%	2	40.0%	0	0.0%	5
New Spr 2007																				

Area	Semester	Student Demographics - Ethnicity										Total	
		Asian %	African American %	Filipino %	Hispanic %	American Indian %	Other %	Pacific Islander %	White %	Unknown %			
Southwest	N/A												
	Spring 2005	1 2.1%	5 10.4%	1 2.1%	20 41.7%	1 2.1%	0 0.0%	0 0.0%	17 35.4%	3 6.3%	48		
	Spring 2004	0 0.0%	0 0.0%	0 0.0%	0 0.0%	0 0.0%	0 0.0%	0 0.0%	0 0.0%	0 0.0%	0		
	Spring 2003	16 3.2%	46 9.2%	8 1.6%	173 34.5%	9 1.8%	1 0.2%	2 0.4%	230 45.8%	17 3.4%	502		
	Spring 2002	19 2.7%	74 10.6%	17 2.4%	237 33.9%	19 2.7%	2 0.3%	0 0.0%	310 44.3%	21 3.0%	699		
Stockdale	Spring 2001	21 2.8%	67 8.9%	11 1.5%	240 31.8%	11 1.5%	0 0.0%	0 0.0%	384 50.9%	21 2.8%	755		
	Spring 2010	24 3.6%	47 7.0%	19 2.8%	235 35.0%	5 0.7%	0 0.0%	0 0.0%	263 39.1%	79 11.8%	672		
	Spring 2009	39 3.7%	87 8.2%	28 2.6%	408 38.5%	11 1.0%	1 0.1%	3 0.3%	415 39.2%	68 6.4%	1,060		
	Spring 2008	41 4.4%	79 8.4%	19 2.0%	362 38.4%	6 0.6%	0 0.0%	7 0.7%	382 40.6%	46 4.9%	942		
	Spring 2007	36 4.6%	52 6.7%	19 2.4%	303 38.9%	11 1.4%	0 0.0%	5 0.6%	314 40.3%	39 5.0%	779		
Tehachapi	Spring 2006	25 3.8%	39 6.0%	7 1.1%	253 38.7%	12 1.8%	0 0.0%	0 0.0%	293 44.8%	25 3.8%	654		
	New Fall 2005												
	N/A												
	Spring 2004	1 1.9%	4 7.4%	0 0.0%	11 20.4%	2 3.7%	0 0.0%	0 0.0%	29 53.7%	7 13.0%	54		
	Spring 2003	1 1.4%	3 4.1%	1 1.4%	13 17.8%	3 4.1%	0 0.0%	0 0.0%	47 64.4%	5 6.8%	73		
Weekend	Spring 2002	2 1.1%	9 5.2%	0 0.0%	39 22.4%	2 1.1%	0 0.0%	0 0.0%	114 65.5%	8 4.6%	174		
	Spring 2001	0 0.0%	3 1.5%	0 0.0%	37 18.7%	3 1.5%	0 0.0%	0 0.0%	146 73.7%	9 4.5%	198		
	Spring 2010	7 1.4%	33 6.8%	2 0.4%	230 47.1%	5 1.0%	0 0.0%	0 0.0%	136 27.9%	75 15.4%	488		
	Spring 2009	16 3.7%	43 9.9%	9 2.1%	195 44.9%	6 1.4%	0 0.0%	2 0.5%	128 29.5%	35 8.1%	434		
	Spring 2008	15 3.0%	51 10.3%	16 3.2%	239 48.2%	4 0.8%	0 0.0%	2 0.4%	148 29.8%	21 4.2%	496		
	Spring 2007	7 1.9%	26 7.0%	5 1.4%	181 49.1%	6 1.6%	0 0.0%	3 0.8%	126 34.1%	15 4.1%	369		
	Spring 2006	7 1.8%	41 10.6%	3 0.8%	219 56.6%	3 0.8%	1 0.3%	1 0.3%	99 25.6%	13 3.4%	387		
	Spring 2005	13 3.6%	28 7.8%	6 1.7%	191 53.1%	6 1.7%	1 0.3%	1 0.3%	104 28.9%	10 2.8%	360		
	Spring 2004	11 2.7%	28 6.9%	8 2.0%	206 50.6%	3 0.7%	0 0.0%	0 0.0%	135 33.2%	16 3.9%	407		
Weill	Spring 2003	15 3.3%	39 8.5%	9 2.0%	204 44.3%	6 1.3%	0 0.0%	1 0.2%	171 37.1%	16 3.5%	461		
	Spring 2002	10 1.9%	42 8.0%	17 3.2%	216 41.2%	11 2.1%	0 0.0%	2 0.4%	205 39.1%	21 4.0%	524		
	Spring 2001	13 2.4%	61 11.4%	8 1.5%	221 41.2%	9 1.7%	0 0.0%	2 0.4%	201 37.4%	22 4.1%	537		
	Spring 2010	9 2.4%	30 7.9%	12 3.2%	122 32.2%	8 2.1%	0 0.0%	1 0.3%	147 38.8%	50 13.2%	379		
	Spring 2009	11 2.5%	34 7.7%	12 2.7%	142 32.0%	14 3.2%	0 0.0%	2 0.5%	202 45.5%	27 6.1%	444		
	Spring 2008	7 1.8%	34 8.6%	4 1.0%	142 36.0%	7 1.8%	0 0.0%	0 0.0%	167 42.4%	33 8.4%	394		
	Spring 2007	5 1.4%	17 4.8%	3 0.8%	129 36.4%	7 2.0%	0 0.0%	1 0.3%	173 48.9%	19 5.4%	354		
	Spring 2006	9 2.2%	21 5.2%	14 3.5%	146 36.3%	7 1.7%	0 0.0%	2 0.5%	192 47.8%	11 2.7%	402		
	Spring 2005	0 0.0%	0 0.0%	0 0.0%	0 0.0%	0 0.0%	0 0.0%	0 0.0%	0 0.0%	0 0.0%	0		
Spring 2004	9 2.1%	45 10.4%	4 0.9%	176 40.8%	7 1.6%	0 0.0%	1 0.2%	174 40.4%	15 3.5%	431			
Spring 2003	9 1.7%	62 11.9%	6 1.1%	209 40.0%	11 2.1%	0 0.0%	0 0.0%	212 40.5%	14 2.7%	523			
Spring 2002	8 1.8%	42 9.5%	6 1.4%	153 34.6%	14 3.2%	0 0.0%	0 0.0%	199 45.0%	20 4.5%	442			
Spring 2001	8 1.8%	46 10.4%	4 0.9%	140 31.7%	12 2.7%	0 0.0%	1 0.2%	209 47.4%	21 4.8%	441			