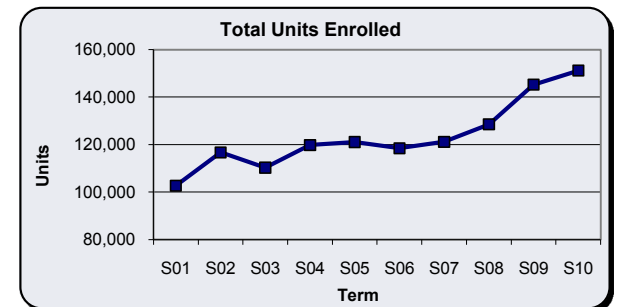
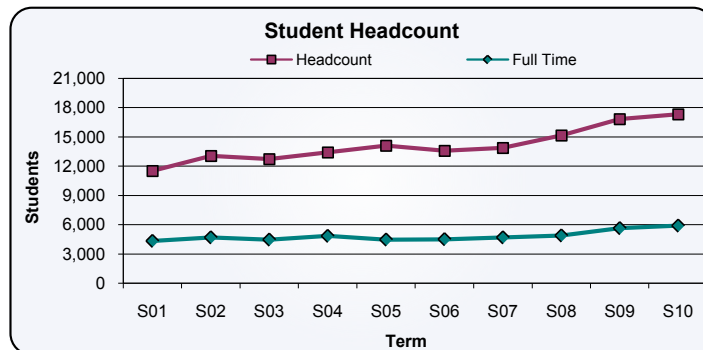
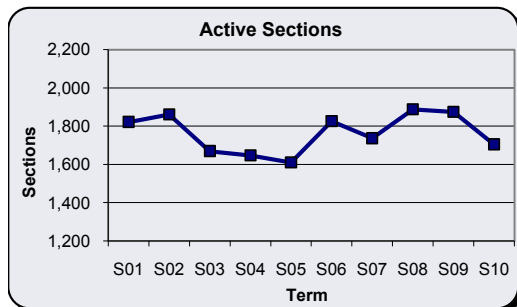
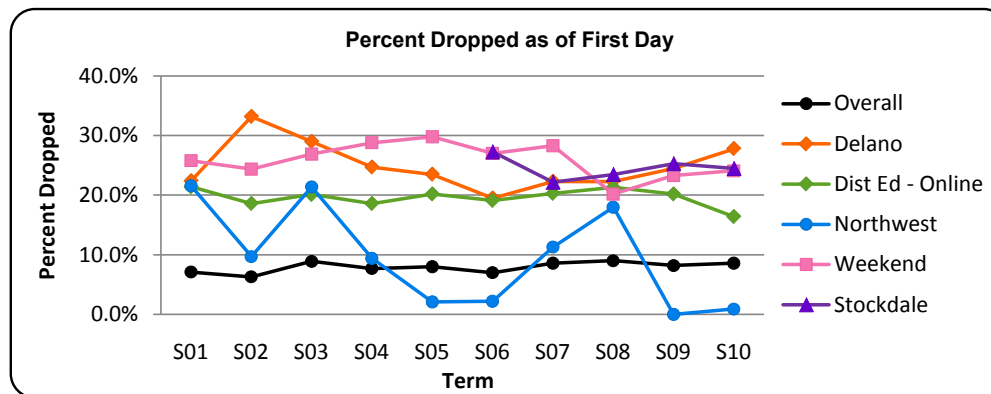
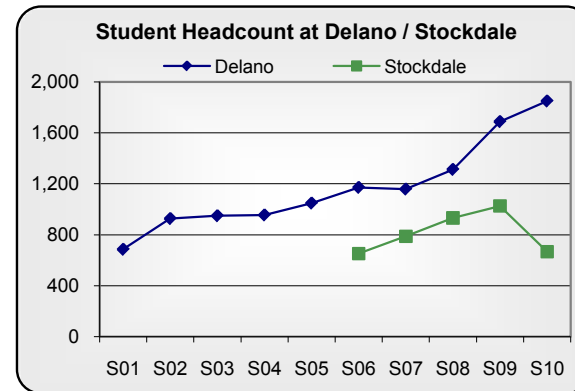
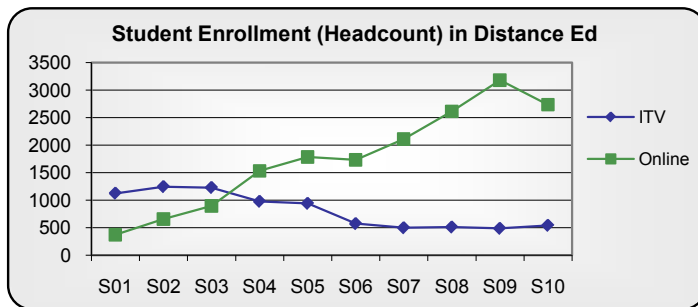
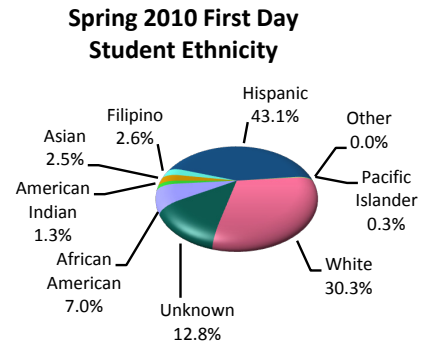
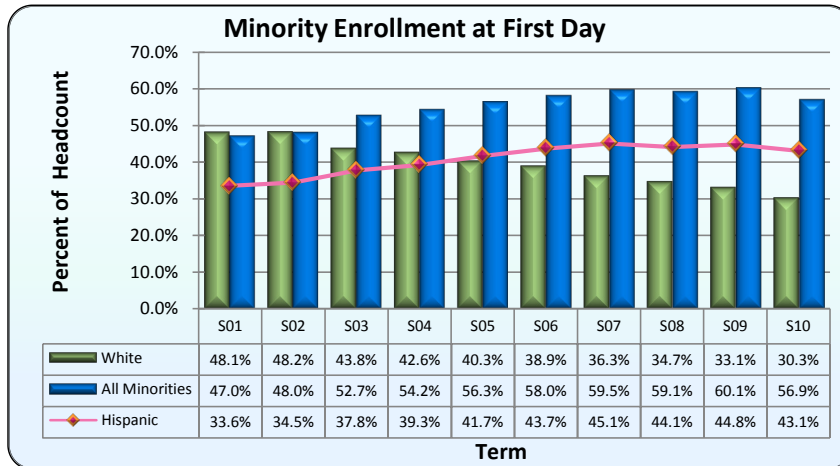


Bakersfield College
First Day Enrollment (Headcount) Statistics - 10 Year Trend
 Spring 2001 through Spring 2010

	Spring 2001	Spring 2002	Spring 2003	Spring 2004	Spring 2005	Spring 2006	Spring 2007	Spring 2008	Spring 2009	Spring 2010									
		% change Prev Yr	% change Prev Yr	% change Prev Yr	% change Prev Yr	% change Prev Yr	% change Prev Yr	% change Prev Yr	% change Prev Yr	% change Prev Yr									
Students Registered	12,375	13,915	12.4%	13,933	0.1%	14,518	4.2%	15,301	5.4%	14,574	-4.8%	15,148	3.9%	16,636	9.8%	18,323	10.1%	18,930	3.3%
Students Dropped	880	880	0.0%	1,236	40.5%	1,122	-9.2%	1,218	8.6%	1,019	-16.3%	1,300	27.6%	1,501	15.5%	1,499	-0.1%	1,624	8.3%
Percent Dropped	7.1%	6.3%		8.9%		7.7%		8.0%		7.0%		8.6%		9.0%		8.2%		8.6%	
Students Enrolled	11,495	13,035	13.4%	12,697	-2.6%	13,396	5.5%	14,083	5.1%	13,555	-3.7%	13,848	2.2%	15,135	9.3%	16,824	11.2%	17,306	2.9%
Male	4,470	5,510	23.3%	5,007	-9.1%	5,413	8.1%	5,765	6.5%	5,412	-6.1%	5,283	-2.4%	5,953	12.7%	6,802	14.3%	7,515	10.5%
Percent of All	38.9%	42.3%		39.4%		40.4%		40.9%		39.9%		38.1%		39.3%		40.4%		43.4%	
Female	7,025	7,525	7.1%	7,690	2.2%	7,983	3.8%	8,318	4.2%	8,143	-2.1%	8,565	5.2%	9,182	7.2%	9,987	8.8%	9,768	-2.2%
Percent of All	61.1%	57.7%		60.6%		59.6%		59.1%		60.1%		61.9%		60.7%		59.4%		56.4%	
Day	9,195	10,189	10.8%	10,409	2.2%	11,027	5.9%	11,702	6.1%	11,020	-5.8%	11,259	2.2%	12,401	10.1%	13,820	11.4%	14,690	6.3%
Percent of All	80.0%	78.2%		82.0%		82.3%		83.1%		81.3%		81.3%		81.9%		82.1%		84.9%	
Evening	2,300	2,846	23.7%	2,288	-19.6%	2,369	3.5%	2,381	0.5%	2,535	6.5%	2,589	2.1%	2,734	5.6%	3,004	9.9%	2,616	-12.9%
Percent of All	20.0%	21.8%		18.0%		17.7%		16.9%		18.7%		18.7%		18.1%		17.9%		15.1%	
Full-time	4,329	4,690	8.3%	4,463	-4.8%	4,841	8.5%	4,465	-7.8%	4,506	0.9%	4,688	4.0%	4,882	4.1%	5,632	15.4%	5,892	4.6%
Percent of All	37.7%	36.0%		35.2%		36.1%		31.7%		33.2%		33.9%		32.3%		33.5%		34.0%	
Total Units Enrolled	102,684	116,665	13.6%	110,269	-5.5%	119,808	8.7%	121,080	1.1%	118,459	-2.2%	121,132	2.3%	128,526	6.1%	145,232	13.0%	151,170	4.1%
Less than 21	4,781	5,173	8.2%	5,182	0.2%	5,156	-0.5%	5,639	9.4%	5,580	-1.0%	5,716	2.4%	6,176	8.0%	6,777	9.7%	7,034	3.8%
Percent of All	41.6%	39.7%		40.8%		38.5%		40.0%		41.2%		41.3%		40.8%		40.3%		40.6%	
Active Sections	1,822	1,862	2.2%	1,670	-10.3%	1,648	-1.3%	1,611	-2.2%	1,826	13.3%	1,737	-4.9%	1,888	8.7%	1,875	-0.7%	1,705	-9.1%
Cancelled Sections *	54	59		142		62		69		54		123		93		97		106	



Bakersfield College
First Day Enrollment (Headcount) Statistics - Points of Interest
 Spring 2001 through Spring 2010



Bakersfield College
First Day Enrollment (Headcount) Statistics by Area / Type
Spring 2001 through Spring 2010

Figures for Total Enrollment (Headcount) are unduplicated while figures for the areas are duplicated. For example, a student taking coursework at the Panorama Campus and at Delano would be counted in both areas but only once in the Total Enrollment count.

Area	Semester	Enrollment						Student Demographics											
		Registered	Dropped	% Dropped	Currently Enrolled	Units	% of All Units	Male	%	Female	%	Day	%	Evening	%	Fulltime	%	Less than 21 yrs old	%
Total Enrollment (Headcount)	Spring 2010	18,930	1,624	8.6%	17,306	151,170		7,515	43.4%	9,768	56.4%	14,690	84.9%	2,616	15.1%	5,892	34.0%	7,034	40.6%
	Spring 2009	18,323	1,499	8.2%	16,824	145,232		6,802	40.4%	9,987	59.4%	13,820	82.1%	3,004	17.9%	5,632	33.5%	6,777	40.3%
	Spring 2008	16,636	1,501	9.0%	15,135	128,526		5,953	39.3%	9,182	60.7%	12,401	81.9%	2,734	18.1%	4,882	32.3%	6,176	40.8%
	Spring 2007	15,148	1,300	8.6%	13,848	121,132		5,283	38.1%	8,565	61.9%	11,259	81.3%	2,589	18.7%	4,688	33.9%	5,716	41.3%
	Spring 2006	14,574	1,019	7.0%	13,555	118,459		5,412	39.9%	8,143	60.1%	11,020	81.3%	2,535	18.7%	4,506	33.2%	5,580	41.2%
	Spring 2005	15,301	1,218	8.0%	14,083	121,080		5,765	40.9%	8,318	59.1%	11,702	83.1%	2,381	16.9%	4,465	31.7%	5,639	40.0%
	Spring 2004	14,518	1,122	7.7%	13,396	119,808		5,413	40.4%	7,983	59.6%	11,027	82.3%	2,369	17.7%	4,841	36.1%	5,156	38.5%
	Spring 2003	13,933	1,236	8.9%	12,697	110,269		5,007	39.4%	7,690	60.6%	10,409	82.0%	2,288	18.0%	4,463	35.2%	5,182	40.8%
	Spring 2002	13,915	880	6.3%	13,035	116,665		5,510	42.3%	7,525	57.7%	10,189	78.2%	2,846	21.8%	4,690	36.0%	5,173	39.7%
	Spring 2001	12,375	880	7.1%	11,495	102,684		4,470	38.9%	7,025	61.1%	9,195	80.0%	2,300	20.0%	4,329	37.7%	4,781	41.6%
Arvin-Lamont	Spring 2010	79	22	27.8%	57	174	0.1%	19	33.3%	38	66.7%	0	0.0%	57	100.0%	0	0.0%	27	47.4%
	Spring 2009	86	14	16.3%	72	276	0.2%	11	15.3%	60	83.3%	0	0.0%	72	100.0%	0	0.0%	25	34.7%
	Spring 2008	93	20	21.5%	73	276	0.2%	11	15.1%	62	84.9%	0	0.0%	73	100.0%	0	0.0%	30	41.1%
	Spring 2007	90	28	31.1%	62	164	0.1%	9	14.5%	53	85.5%	0	0.0%	62	100.0%	0	0.0%	23	37.1%
	Spring 2006	98	25	25.5%	73	214	0.2%	5	6.8%	68	93.2%	0	0.0%	73	100.0%	0	0.0%	12	16.4%
	Spring 2005	146	33	22.6%	113	434	0.4%	17	15.0%	96	85.0%	0	0.0%	113	100.0%	0	0.0%	24	21.2%
	Spring 2004	75	4	5.3%	71	276	0.2%	5	7.0%	66	93.0%	0	0.0%	71	100.0%	0	0.0%	9	12.7%
	Spring 2003	0	0	0.0%	0	0	0.0%	0	0.0%	0	0.0%	0	0.0%	0	0.0%	0	0.0%	0	0.0%
	Spring 2002	0	0	0.0%	0	0	0.0%	0	0.0%	0	0.0%	0	0.0%	0	0.0%	0	0.0%	0	0.0%
	Spring 2001	0	0	0.0%	0	0	0.0%	0	0.0%	0	0.0%	0	0.0%	0	0.0%	0	0.0%	0	0.0%
Bakersfield Area	Spring 2010	705	94	13.3%	611	1,768	1.2%	240	39.3%	369	60.4%	563	92.1%	48	7.9%	0	0.0%	210	34.4%
	Spring 2009	819	134	16.4%	685	1,925	1.3%	254	37.1%	428	62.5%	658	96.1%	27	3.9%	12	1.8%	228	33.3%
	Spring 2008	951	160	16.8%	791	2,602	2.0%	211	26.7%	580	73.3%	730	92.3%	61	7.7%	0	0.0%	218	27.6%
	Spring 2007	954	149	15.6%	805	2,730	2.3%	214	26.6%	591	73.4%	789	98.0%	16	2.0%	0	0.0%	200	24.8%
	Spring 2006	820	87	10.6%	733	2,822	2.4%	248	33.8%	485	66.2%	694	94.7%	39	5.3%	52	7.1%	223	30.4%
	Spring 2005	960	140	14.6%	820	2,236	1.8%	269	32.8%	551	67.2%	744	90.7%	76	9.3%	29	3.5%	291	35.5%
	Spring 2004	1,245	122	9.8%	1,123	6,457	5.4%	663	59.0%	460	41.0%	1,043	92.9%	80	7.1%	22	2.0%	146	13.0%
	Spring 2003	598	94	15.7%	504	1,957	1.8%	135	26.8%	369	73.2%	422	83.7%	82	16.3%	42	8.3%	140	27.8%
	Spring 2002	737	109	14.8%	628	2,180	1.9%	216	34.4%	412	65.6%	507	80.7%	121	19.3%	16	2.5%	189	30.1%
	Spring 2001	461	55	11.9%	406	1,296	1.3%	96	23.6%	310	76.4%	373	91.9%	33	8.1%	0	0.0%	108	26.6%
Delano	Spring 2010	2,561	713	27.8%	1,848	12,304	8.1%	690	37.3%	1,155	62.5%	1,204	65.2%	644	34.8%	343	18.6%	914	49.5%
	Spring 2009	2,235	548	24.5%	1,687	10,798	7.4%	555	32.9%	1,127	66.8%	1,010	59.9%	677	40.1%	286	17.0%	823	48.8%
	Spring 2008	1,689	377	22.3%	1,312	8,802	6.8%	419	31.9%	893	68.1%	801	61.1%	511	38.9%	258	19.7%	676	51.5%
	Spring 2007	1,490	332	22.3%	1,158	7,948	6.6%	333	28.8%	825	71.2%	679	58.6%	479	41.4%	204	17.6%	553	47.8%
	Spring 2006	1,455	284	19.5%	1,171	7,704	6.5%	329	28.1%	842	71.9%	646	55.2%	525	44.8%	205	17.5%	552	47.1%
	Spring 2005	1,370	322	23.5%	1,048	6,698	5.5%	297	28.3%	751	71.7%	563	53.7%	485	46.3%	130	12.4%	493	47.0%
	Spring 2004	1,269	314	24.7%	955	6,141	5.1%	283	29.6%	672	70.4%	537	56.2%	418	43.8%	136	14.2%	458	48.0%
	Spring 2003	1,337	388	29.0%	949	5,647	5.1%	298	31.4%	651	68.6%	451	47.5%	498	52.5%	110	11.6%	470	49.5%
	Spring 2002	1,387	460	33.2%	927	5,941	5.1%	289	31.2%	638	68.8%	536	57.8%	391	42.2%	136	14.7%	412	44.4%
	Spring 2001	884	198	22.4%	686	3,951	3.8%	215	31.3%	471	68.7%	291	42.4%	395	57.6%	67	9.8%	319	46.5%

Area	Semester	Enrollment						Student Demographics											
		Registered	Dropped	% Dropped	Currently Enrolled	Units	% of All Units	Male	%	Female	%	Day	%	Evening	%	Fulltime	%	Less than 21 yrs old	%
Dist Ed - ITV	Spring 2010	676	137	20.3%	539	1,932	1.3%	200	37.1%	338	62.7%	539	100.0%	0	0.0%	0	0.0%	174	32.3%
	Spring 2009	629	145	23.1%	484	1,800	1.2%	136	28.1%	348	71.9%	484	100.0%	0	0.0%	2	0.4%	138	28.5%
	Spring 2008	643	135	21.0%	508	1,869	1.5%	126	24.8%	382	75.2%	508	100.0%	0	0.0%	4	0.8%	140	27.6%
	Spring 2007	646	151	23.4%	495	1,791	1.5%	137	27.7%	358	72.3%	495	100.0%	0	0.0%	6	1.2%	139	28.1%
	Spring 2006	705	134	19.0%	571	2,079	1.8%	146	25.6%	425	74.4%	568	99.5%	3	0.5%	3	0.5%	165	28.9%
	Spring 2005	1,141	202	17.7%	939	3,558	2.9%	250	26.6%	689	73.4%	932	99.3%	7	0.7%	11	1.2%	271	28.9%
	Spring 2004	1,177	201	17.1%	976	3,634	3.0%	264	27.0%	712	73.0%	976	100.0%	0	0.0%	17	1.7%	279	28.6%
	Spring 2003	1,454	226	15.5%	1,228	4,620	4.2%	356	29.0%	872	71.0%	1,228	100.0%	0	0.0%	10	0.8%	400	32.6%
	Spring 2002	1,442	198	13.7%	1,244	5,010	4.3%	314	25.2%	930	74.8%	1,244	100.0%	0	0.0%	10	0.8%	429	34.5%
	Spring 2001	1,282	158	12.3%	1,124	4,517	4.4%	301	26.8%	823	73.2%	1,124	100.0%	0	0.0%	31	2.8%	353	31.4%
Dist Ed - Online	Spring 2010	3,268	536	16.4%	2,732	13,046	8.6%	945	34.6%	1,783	65.3%	2,718	99.5%	14	0.5%	107	3.9%	869	31.8%
	Spring 2009	3,983	804	20.2%	3,179	15,113	10.4%	1,011	31.8%	2,161	68.0%	3,021	95.0%	158	5.0%	101	3.2%	1,015	31.9%
	Spring 2008	3,321	709	21.3%	2,612	11,174	8.7%	795	30.4%	1,817	69.6%	2,434	93.2%	178	6.8%	62	2.4%	833	31.9%
	Spring 2007	2,646	537	20.3%	2,109	8,975	7.4%	605	28.7%	1,504	71.3%	1,924	91.2%	185	8.8%	42	2.0%	711	33.7%
	Spring 2006	2,138	409	19.1%	1,729	7,159	6.0%	499	28.9%	1,230	71.1%	1,471	85.1%	258	14.9%	31	1.8%	563	32.6%
	Spring 2005	2,232	451	20.2%	1,781	6,521	5.4%	532	29.9%	1,249	70.1%	1,781	100.0%	0	0.0%	19	1.1%	589	33.1%
	Spring 2004	1,879	349	18.6%	1,530	6,009	5.0%	442	28.9%	1,088	71.1%	1,530	100.0%	0	0.0%	15	1.0%	427	27.9%
	Spring 2003	1,117	224	20.1%	893	3,553	3.2%	248	27.8%	645	72.2%	893	100.0%	0	0.0%	7	0.8%	252	28.2%
	Spring 2002	805	150	18.6%	655	2,697	2.3%	224	34.2%	431	65.8%	639	97.6%	16	2.4%	12	1.8%	203	31.0%
	Spring 2001	468	100	21.4%	368	1,432	1.4%	130	35.3%	238	64.7%	368	100.0%	0	0.0%	0	0.0%	124	33.7%
Northwest	Spring 2010	444	4	0.9%	440	3,324	2.2%	437	99.3%	3	0.7%	440	100.0%	0	0.0%	0	0.0%	11	2.5%
	Spring 2009	51	0	0.0%	51	276	0.2%	50	98.0%	1	2.0%	20	39.2%	31	60.8%	0	0.0%	10	19.6%
	Spring 2008	133	24	18.0%	109	630	0.5%	108	99.1%	1	0.9%	30	27.5%	79	72.5%	1	0.9%	43	39.4%
	Spring 2007	97	11	11.3%	86	375	0.3%	83	96.5%	3	3.5%	15	17.4%	71	82.6%	0	0.0%	32	37.2%
	Spring 2006	449	10	2.2%	439	3,229	2.7%	435	99.1%	4	0.9%	380	86.6%	59	13.4%	0	0.0%	27	6.2%
	Spring 2005	570	12	2.1%	558	4,192	3.5%	551	98.7%	7	1.3%	519	93.0%	39	7.0%	1	0.2%	26	4.7%
	Spring 2004	53	5	9.4%	48	188	0.2%	48	100.0%	0	0.0%	1	2.1%	47	97.9%	0	0.0%	19	39.6%
	Spring 2003	402	86	21.4%	316	1,109	1.0%	158	50.0%	158	50.0%	45	14.2%	271	85.8%	0	0.0%	122	38.6%
	Spring 2002	1,138	110	9.7%	1,028	6,289	5.4%	806	78.4%	222	21.6%	174	16.9%	854	83.1%	2	0.2%	155	15.1%
	Spring 2001	407	88	21.6%	319	1,035	1.0%	177	55.5%	142	44.5%	26	8.2%	293	91.8%	0	0.0%	123	38.6%
Panorama Campus	Spring 2010	15,468	1,534	9.9%	13,934	114,127	75.5%	6,104	43.8%	7,810	56.0%	11,432	82.0%	2,502	18.0%	3,988	28.6%	6,079	43.6%
	Spring 2009	15,105	1,558	10.3%	13,547	109,226	75.2%	5,797	42.8%	7,726	57.0%	10,871	80.2%	2,676	19.8%	3,679	27.2%	5,810	42.9%
	Spring 2008	13,765	1,445	10.5%	12,320	97,935	76.2%	5,127	41.6%	7,193	58.4%	9,840	79.9%	2,480	20.1%	3,269	26.5%	5,338	43.3%
	Spring 2007	12,846	1,293	10.1%	11,553	94,710	78.2%	4,676	40.5%	6,877	59.5%	9,203	79.7%	2,350	20.3%	3,200	27.7%	5,108	44.2%
	Spring 2006	12,092	1,001	8.3%	11,091	90,606	76.5%	4,526	40.8%	6,565	59.2%	8,869	80.0%	2,222	20.0%	3,099	27.9%	5,010	45.2%
	Spring 2005	13,206	1,272	9.6%	11,934	96,116	79.4%	4,886	40.9%	7,048	59.1%	9,334	78.2%	2,600	21.8%	3,215	26.9%	5,176	43.4%
	Spring 2004	12,206	1,122	9.2%	11,084	94,419	78.8%	4,453	40.2%	6,631	59.8%	8,676	78.3%	2,408	21.7%	3,562	32.1%	4,732	42.7%
	Spring 2003	12,096	1,200	9.9%	10,896	88,944	80.7%	4,490	41.2%	6,406	58.8%	8,863	81.3%	2,033	18.7%	3,186	29.2%	4,745	43.5%
	Spring 2002	11,431	879	7.7%	10,552	89,401	76.6%	4,338	41.1%	6,214	58.9%	8,450	80.1%	2,102	19.9%	3,357	31.8%	4,747	45.0%
	Spring 2001	10,906	852	7.8%	10,054	85,692	83.5%	4,030	40.1%	6,024	59.9%	8,029	79.9%	2,025	20.1%	3,300	32.8%	4,483	44.6%

Area	Semester	Enrollment						Student Demographics											
		Registered	Dropped	% Dropped	Currently Enrolled	Units	% of All Units	Male	%	Female	%	Day	%	Evening	%	Fulltime	%	Less than 21 yrs old	%
Southwest	no data	0	0	0.0%	0	0	0.0%	0	0.0%	0	0.0%	0	0.0%	0	0.0%	0	0.0%	0	0.0%
	Spring 2005	89	31	34.8%	58	203	0.2%	25	43.1%	33	56.9%	29	50.0%	29	50.0%	0	0.0%	31	53.4%
	Spring 2004	0	0	0.0%	0	0	0.0%	0	0.0%	0	0.0%	0	0.0%	0	0.0%	0	0.0%	0	0.0%
	Spring 2003	658	188	28.6%	470	1,486	1.3%	148	31.5%	322	68.5%	0	0.0%	470	100.0%	0	0.0%	141	30.0%
	Spring 2002	723	130	18.0%	593	1,848	1.6%	182	30.7%	411	69.3%	0	0.0%	593	100.0%	0	0.0%	168	28.3%
	Spring 2001	797	166	20.8%	631	2,013	2.0%	171	27.1%	460	72.9%	0	0.0%	631	100.0%	0	0.0%	192	30.4%
Stockdale	Spring 2010	885	217	24.5%	668	2,050	1.4%	217	32.5%	450	67.4%	0	0.0%	668	100.0%	0	0.0%	260	38.9%
	Spring 2009	1,374	348	25.3%	1,026	3,568	2.5%	307	29.9%	715	69.7%	0	0.0%	1,026	100.0%	0	0.0%	309	30.1%
	Spring 2008	1,219	287	23.5%	932	3,215	2.5%	260	27.9%	672	72.1%	0	0.0%	932	100.0%	0	0.0%	298	32.0%
	Spring 2007	1,013	225	22.2%	788	2,700	2.2%	227	28.8%	561	71.2%	0	0.0%	788	100.0%	0	0.0%	244	31.0%
	Spring 2006	898	245	27.3%	653	2,330	2.0%	192	29.4%	461	70.6%	0	0.0%	653	100.0%	0	0.0%	197	30.2%
	no data	0	0	0.0%	0	0	0.0%	0	0.0%	0	0.0%	0	0.0%	0	0.0%	0	0.0%	0	0.0%
Tehachapi	no data	0	0	0.0%	0	0	0.0%	0	0.0%	0	0.0%	0	0.0%	0	0.0%	0	0.0%	0	0.0%
	Spring 2004	74	21	28.4%	53	173	0.1%	19	35.8%	34	64.2%	3	5.7%	50	94.3%	0	0.0%	31	58.5%
	Spring 2003	169	87	51.5%	82	284	0.3%	28	34.1%	54	65.9%	0	0.0%	82	100.0%	0	0.0%	37	45.1%
	Spring 2002	241	84	34.9%	157	688	0.6%	56	35.7%	101	64.3%	0	0.0%	157	100.0%	1	0.6%	67	42.7%
	Spring 2001	184	44	23.9%	140	450	0.4%	54	38.6%	86	61.4%	0	0.0%	140	100.0%	0	0.0%	73	52.1%
Weekend	Spring 2010	664	160	24.1%	504	1,151	0.8%	191	37.9%	313	62.1%	504	100.0%	0	0.0%	0	0.0%	190	37.7%
	Spring 2009	527	123	23.3%	404	836	0.6%	126	31.2%	276	68.3%	404	100.0%	0	0.0%	0	0.0%	141	34.9%
	Spring 2008	580	117	20.2%	463	856	0.7%	143	30.9%	320	69.1%	463	100.0%	0	0.0%	0	0.0%	139	30.0%
	Spring 2007	537	152	28.3%	385	878	0.7%	95	24.7%	290	75.3%	385	100.0%	0	0.0%	0	0.0%	125	32.5%
	Spring 2006	378	102	27.0%	276	849	0.7%	86	31.2%	190	68.8%	276	100.0%	0	0.0%	0	0.0%	78	28.3%
	Spring 2005	517	154	29.8%	363	1,084	0.9%	105	28.9%	258	71.1%	363	100.0%	0	0.0%	0	0.0%	96	26.4%
	Spring 2004	570	164	28.8%	406	1,234	1.0%	145	35.7%	261	64.3%	406	100.0%	0	0.0%	0	0.0%	141	34.7%
	Spring 2003	579	156	26.9%	423	1,187	1.1%	153	36.2%	270	63.8%	423	100.0%	0	0.0%	0	0.0%	142	33.6%
	Spring 2002	668	163	24.4%	505	1,351	1.2%	140	27.7%	365	72.3%	499	98.8%	6	1.2%	0	0.0%	161	31.9%
Spring 2001	585	151	25.8%	434	1,007	1.0%	105	24.2%	329	75.8%	405	93.3%	29	6.7%	0	0.0%	94	21.7%	
Weill	Spring 2010	460	104	22.6%	356	1,296	0.9%	193	54.2%	162	45.5%	81	22.8%	275	77.2%	1	0.3%	109	30.6%
	Spring 2009	577	145	25.1%	432	1,416	1.0%	235	54.4%	195	45.1%	148	34.3%	284	65.7%	5	1.2%	146	33.8%
	Spring 2008	455	113	24.8%	342	1,159	0.9%	225	65.8%	117	34.2%	134	39.2%	208	60.8%	2	0.6%	133	38.9%
	Spring 2007	305	66	21.6%	239	862	0.7%	140	58.6%	99	41.4%	93	38.9%	146	61.1%	0	0.0%	83	34.7%
	Spring 2006	533	109	20.5%	424	1,451	1.2%	132	31.1%	292	68.9%	166	39.2%	258	60.8%	0	0.0%	110	25.9%
	Spring 2005	0	0	0.0%	0	0	0.0%	0	0.0%	0	0.0%	0	0.0%	0	0.0%	0	0.0%	0	0.0%
	Spring 2004	506	112	22.1%	394	1,280	1.1%	130	33.0%	264	67.0%	10	2.5%	384	97.5%	3	0.8%	72	18.3%
	Spring 2003	615	126	20.5%	489	1,483	1.3%	146	29.9%	343	70.1%	30	6.1%	459	93.9%	0	0.0%	108	22.1%
	Spring 2002	497	87	17.5%	410	1,262	1.1%	133	32.4%	277	67.6%	30	7.3%	380	92.7%	0	0.0%	72	17.6%
Spring 2001	543	121	22.3%	422	1,293	1.3%	148	35.1%	274	64.9%	27	6.4%	395	93.6%	0	0.0%	89	21.1%	

Bakersfield College
First Day Enrollment (Headcount) Statistics by Area / Type
Spring 2001 through Spring 2010

Figures for Total Enrollment (Headcount) are unduplicated while figures for the areas are duplicated. For example, a student taking coursework at the Panorama Campus and at Delano would be counted in both areas but only once in the Total Enrollment count.

Area	Semester	Student Demographics - Ethnicity														Total				
		Asian	%	African American	%	Filipino	%	Hispanic	%	American Indian	%	Other	%	Pacific Islander	%		White	%	Unknown	%
Total Enrollment (Headcount)	Spring 2010	441	2.5%	1,209	7.0%	453	2.6%	7,463	43.1%	231	1.3%	2	0.0%	53	0.3%	5,238	30.3%	2,216	12.8%	17,306
	Spring 2009	513	3.0%	1,293	7.7%	487	2.9%	7,529	44.8%	238	1.4%	6	0.0%	45	0.3%	5,564	33.1%	1,149	6.8%	16,824
	Spring 2008	443	2.9%	1,065	7.0%	489	3.2%	6,678	44.1%	232	1.5%	4	0.0%	55	0.4%	5,251	34.7%	918	6.1%	15,135
	Spring 2007	435	3.1%	831	6.0%	480	3.5%	6,239	45.1%	208	1.5%	4	0.0%	44	0.3%	5,024	36.3%	583	4.2%	13,848
	Spring 2006	384	2.8%	863	6.4%	416	3.1%	5,917	43.7%	218	1.6%	7	0.1%	37	0.3%	5,268	38.9%	445	3.3%	13,555
	Spring 2005	425	3.0%	968	6.9%	402	2.9%	5,871	41.7%	210	1.5%	6	0.0%	47	0.3%	5,673	40.3%	481	3.4%	14,083
	Spring 2004	421	3.1%	945	7.1%	373	2.8%	5,268	39.3%	209	1.6%	5	0.0%	38	0.3%	5,700	42.6%	437	3.3%	13,396
	Spring 2003	386	3.0%	940	7.4%	316	2.5%	4,801	37.8%	215	1.7%	3	0.0%	26	0.2%	5,555	43.8%	455	3.6%	12,697
	Spring 2002	384	2.9%	803	6.2%	307	2.4%	4,503	34.5%	240	1.8%	3	0.0%	23	0.2%	6,286	48.2%	486	3.7%	13,035
	Spring 2001	369	3.2%	724	6.3%	239	2.1%	3,866	33.6%	195	1.7%	1	0.0%	15	0.1%	5,530	48.1%	556	4.8%	11,495
Arvin-Lamont	Spring 2010	0	0.0%	2	3.5%	1	1.8%	41	71.9%	0	0.0%	0	0.0%	0	0.0%	7	12.3%	6	10.5%	57
	Spring 2009	2	2.8%	3	4.2%	0	0.0%	62	86.1%	1	1.4%	0	0.0%	0	0.0%	1	1.4%	3	4.2%	72
	Spring 2008	1	1.4%	1	1.4%	0	0.0%	68	93.2%	0	0.0%	0	0.0%	0	0.0%	1	1.4%	2	2.7%	73
	Spring 2007	0	0.0%	1	1.6%	1	1.6%	57	91.9%	0	0.0%	0	0.0%	0	0.0%	2	3.2%	1	1.6%	62
	Spring 2006	1	1.4%	2	2.7%	0	0.0%	62	84.9%	0	0.0%	0	0.0%	0	0.0%	8	11.0%	0	0.0%	73
	Spring 2005	0	0.0%	1	0.9%	1	0.9%	98	86.7%	2	1.8%	0	0.0%	0	0.0%	11	9.7%	0	0.0%	113
	Spring 2004	0	0.0%	0	0.0%	0	0.0%	61	85.9%	1	1.4%	0	0.0%	0	0.0%	9	12.7%	0	0.0%	71
	Spring 2003	0	0.0%	0	0.0%	0	0.0%	0	0.0%	0	0.0%	0	0.0%	0	0.0%	0	0.0%	0	0.0%	0
	Spring 2002	0	0.0%	0	0.0%	0	0.0%	0	0.0%	0	0.0%	0	0.0%	0	0.0%	0	0.0%	0	0.0%	0
	Spring 2001	0	0.0%	0	0.0%	0	0.0%	0	0.0%	0	0.0%	0	0.0%	0	0.0%	0	0.0%	0	0.0%	0
Bakersfield Area	Spring 2010	15	2.5%	65	10.6%	10	1.6%	216	35.4%	8	1.3%	0	0.0%	1	0.2%	224	36.7%	72	11.8%	611
	Spring 2009	29	4.2%	64	9.3%	31	4.5%	252	36.8%	15	2.2%	0	0.0%	3	0.4%	254	37.1%	37	5.4%	685
	Spring 2008	27	3.4%	73	9.2%	30	3.8%	288	36.4%	18	2.3%	2	0.3%	2	0.3%	328	41.5%	23	2.9%	791
	Spring 2007	19	2.4%	69	8.6%	53	6.6%	263	32.7%	16	2.0%	1	0.1%	0	0.0%	351	43.6%	33	4.1%	805
	Spring 2006	23	3.1%	41	5.6%	40	5.5%	254	34.7%	10	1.4%	1	0.1%	0	0.0%	342	46.7%	22	3.0%	733
	Spring 2005	34	4.1%	60	7.3%	43	5.2%	325	39.6%	13	1.6%	0	0.0%	3	0.4%	320	39.0%	22	2.7%	820
	Spring 2004	26	2.3%	79	7.0%	33	2.9%	280	24.9%	21	1.9%	1	0.1%	4	0.4%	628	55.9%	51	4.5%	1,123
	Spring 2003	21	4.2%	40	7.9%	14	2.8%	167	33.1%	9	1.8%	0	0.0%	2	0.4%	230	45.6%	21	4.2%	504
	Spring 2002	23	3.7%	61	9.7%	21	3.3%	179	28.5%	9	1.4%	1	0.2%	1	0.2%	312	49.7%	21	3.3%	628
	Spring 2001	15	3.7%	38	9.4%	5	1.2%	116	28.6%	9	2.2%	0	0.0%	1	0.2%	200	49.3%	22	5.4%	406
Delano	Spring 2010	24	1.3%	46	2.5%	172	9.3%	1,277	69.1%	6	0.3%	0	0.0%	8	0.4%	105	5.7%	210	11.4%	1,848
	Spring 2009	24	1.4%	39	2.3%	173	10.3%	1,237	73.3%	5	0.3%	0	0.0%	1	0.1%	93	5.5%	115	6.8%	1,687
	Spring 2008	16	1.2%	29	2.2%	159	12.1%	962	73.3%	4	0.3%	0	0.0%	4	0.3%	61	4.6%	77	5.9%	1,312
	Spring 2007	16	1.4%	22	1.9%	152	13.1%	862	74.4%	3	0.3%	0	0.0%	4	0.3%	68	5.9%	31	2.7%	1,158
	Spring 2006	17	1.5%	23	2.0%	178	15.2%	862	73.6%	7	0.6%	0	0.0%	3	0.3%	65	5.6%	16	1.4%	1,171
	Spring 2005	22	2.1%	15	1.4%	142	13.5%	784	74.8%	2	0.2%	1	0.1%	1	0.1%	59	5.6%	22	2.1%	1,048
	Spring 2004	21	2.2%	18	1.9%	142	14.9%	665	69.6%	3	0.3%	0	0.0%	0	0.0%	86	9.0%	20	2.1%	955
	Spring 2003	15	1.6%	31	3.3%	103	10.9%	658	69.3%	4	0.4%	0	0.0%	0	0.0%	113	11.9%	25	2.6%	949
	Spring 2002	17	1.8%	34	3.7%	93	10.0%	581	62.7%	8	0.9%	0	0.0%	1	0.1%	156	16.8%	37	4.0%	927
	Spring 2001	8	1.2%	21	3.1%	76	11.1%	451	65.7%	4	0.6%	0	0.0%	0	0.0%	75	10.9%	51	7.4%	686

Area	Semester	Student Demographics - Ethnicity														Total				
		Asian %	African American %	Filipino %	Hispanic %	American Indian %	Other %	Pacific Islander %	White %	Unknown %										
Dist Ed - ITV	Spring 2010	16	3.0%	58	10.8%	8	1.5%	153	28.4%	10	1.9%	0	0.0%	2	0.4%	226	41.9%	66	12.2%	539
	Spring 2009	15	3.1%	58	12.0%	5	1.0%	151	31.2%	6	1.2%	0	0.0%	1	0.2%	215	44.4%	33	6.8%	484
	Spring 2008	14	2.8%	45	8.9%	11	2.2%	157	30.9%	10	2.0%	0	0.0%	3	0.6%	229	45.1%	39	7.7%	508
	Spring 2007	11	2.2%	27	5.5%	13	2.6%	166	33.5%	10	2.0%	0	0.0%	1	0.2%	244	49.3%	23	4.6%	495
	Spring 2006	12	2.1%	50	8.8%	12	2.1%	164	28.7%	18	3.2%	0	0.0%	1	0.2%	290	50.8%	24	4.2%	571
	Spring 2005	20	2.1%	81	8.6%	20	2.1%	324	34.5%	17	1.8%	0	0.0%	2	0.2%	438	46.6%	37	3.9%	939
	Spring 2004	21	2.2%	92	9.4%	14	1.4%	276	28.3%	23	2.4%	0	0.0%	5	0.5%	511	52.4%	34	3.5%	976
	Spring 2003	23	1.9%	113	9.2%	20	1.6%	343	27.9%	14	1.1%	0	0.0%	3	0.2%	662	53.9%	50	4.1%	1,228
	Spring 2002	18	1.4%	88	7.1%	11	0.9%	335	26.9%	27	2.2%	0	0.0%	4	0.3%	714	57.4%	47	3.8%	1,244
Spring 2001	13	1.2%	83	7.4%	14	1.2%	285	25.4%	20	1.8%	0	0.0%	0	0.0%	661	58.8%	48	4.3%	1,124	
Dist Ed - Online	Spring 2010	65	2.4%	191	7.0%	46	1.7%	920	33.7%	31	1.1%	0	0.0%	3	0.1%	1,152	42.2%	324	11.9%	2,732
	Spring 2009	92	2.9%	267	8.4%	77	2.4%	1,064	33.5%	48	1.5%	0	0.0%	13	0.4%	1,398	44.0%	220	6.9%	3,179
	Spring 2008	78	3.0%	176	6.7%	67	2.6%	885	33.9%	38	1.5%	0	0.0%	9	0.3%	1,218	46.6%	141	5.4%	2,612
	Spring 2007	55	2.6%	135	6.4%	44	2.1%	725	34.4%	45	2.1%	3	0.1%	4	0.2%	1,003	47.6%	95	4.5%	2,109
	Spring 2006	34	2.0%	113	6.5%	39	2.3%	588	34.0%	30	1.7%	2	0.1%	7	0.4%	854	49.4%	62	3.6%	1,729
	Spring 2005	42	2.4%	123	6.9%	45	2.5%	580	32.6%	36	2.0%	2	0.1%	5	0.3%	867	48.7%	81	4.5%	1,781
	Spring 2004	25	1.6%	123	8.0%	38	2.5%	444	29.0%	24	1.6%	0	0.0%	3	0.2%	824	53.9%	49	3.2%	1,530
	Spring 2003	22	2.5%	61	6.8%	14	1.6%	212	23.7%	12	1.3%	0	0.0%	2	0.2%	523	58.6%	47	5.3%	893
	Spring 2002	17	2.6%	29	4.4%	8	1.2%	137	20.9%	8	1.2%	0	0.0%	1	0.2%	418	63.8%	37	5.6%	655
Spring 2001	14	3.8%	17	4.6%	5	1.4%	75	20.4%	3	0.8%	0	0.0%	1	0.3%	240	65.2%	13	3.5%	368	
Northwest	Spring 2010	2	0.5%	13	3.0%	2	0.5%	73	16.6%	10	2.3%	0	0.0%	2	0.5%	312	70.9%	26	5.9%	440
	Spring 2009	1	2.0%	1	2.0%	0	0.0%	17	33.3%	1	2.0%	0	0.0%	0	0.0%	27	52.9%	4	7.8%	51
	Spring 2008	0	0.0%	1	0.9%	2	1.8%	21	19.3%	3	2.8%	0	0.0%	0	0.0%	69	63.3%	13	11.9%	109
	Spring 2007	1	1.2%	1	1.2%	1	1.2%	17	19.8%	6	7.0%	0	0.0%	0	0.0%	55	64.0%	5	5.8%	86
	Spring 2006	3	0.7%	14	3.2%	1	0.2%	83	18.9%	12	2.7%	0	0.0%	2	0.5%	306	69.7%	18	4.1%	439
	Spring 2005	4	0.7%	21	3.8%	3	0.5%	95	17.0%	10	1.8%	0	0.0%	3	0.5%	405	72.6%	17	3.0%	558
	Spring 2004	1	2.1%	1	2.1%	0	0.0%	8	16.7%	1	2.1%	0	0.0%	0	0.0%	34	70.8%	3	6.3%	48
	Spring 2003	4	1.3%	10	3.2%	4	1.3%	79	25.0%	4	1.3%	0	0.0%	1	0.3%	202	63.9%	12	3.8%	316
	Spring 2002	8	0.8%	40	3.9%	5	0.5%	178	17.3%	28	2.7%	1	0.1%	4	0.4%	726	70.6%	38	3.7%	1,028
Spring 2001	7	2.2%	8	2.5%	5	1.6%	71	22.3%	1	0.3%	0	0.0%	0	0.0%	212	66.5%	15	4.7%	319	
Panorama Campus	Spring 2010	392	2.8%	1,052	7.5%	312	2.2%	5,889	42.3%	201	1.4%	2	0.0%	46	0.3%	4,207	30.2%	1,833	13.2%	13,934
	Spring 2009	430	3.2%	1,078	8.0%	324	2.4%	5,962	44.0%	203	1.5%	6	0.0%	42	0.3%	4,561	33.7%	941	6.9%	13,547
	Spring 2008	380	3.1%	912	7.4%	355	2.9%	5,307	43.1%	200	1.6%	4	0.0%	44	0.4%	4,354	35.3%	764	6.2%	12,320
	Spring 2007	383	3.3%	742	6.4%	357	3.1%	5,070	43.9%	177	1.5%	2	0.0%	42	0.4%	4,287	37.1%	493	4.3%	11,553
	Spring 2006	344	3.1%	748	6.7%	296	2.7%	4,782	43.1%	187	1.7%	6	0.1%	28	0.3%	4,314	38.9%	386	3.5%	11,091
	Spring 2005	387	3.2%	881	7.4%	294	2.5%	4,879	40.9%	183	1.5%	5	0.0%	44	0.4%	4,848	40.6%	413	3.5%	11,934
	Spring 2004	392	3.5%	827	7.5%	264	2.4%	4,335	39.1%	175	1.6%	4	0.0%	33	0.3%	4,690	42.3%	364	3.3%	11,084
	Spring 2003	359	3.3%	838	7.7%	242	2.2%	4,012	36.8%	194	1.8%	3	0.0%	24	0.2%	4,836	44.4%	388	3.6%	10,896
	Spring 2002	347	3.3%	691	6.5%	218	2.1%	3,651	34.6%	189	1.8%	2	0.0%	17	0.2%	5,039	47.8%	398	3.8%	10,552
Spring 2001	350	3.5%	635	6.3%	185	1.8%	3,317	33.0%	177	1.8%	1	0.0%	13	0.1%	4,876	48.5%	500	5.0%	10,054	

Area	Semester	Student Demographics - Ethnicity														Total				
		Asian	%	African American	%	Filipino	%	Hispanic	%	American Indian	%	Other	%	Pacific Islander	%		White	%	Unknown	%
Southwest	no data	0	0.0%	0	0.0%	0	0.0%	0	0.0%	0	0.0%	0	0.0%	0	0.0%	0	0.0%	0	0.0%	0
	Spring 2005	1	1.7%	9	15.5%	1	1.7%	23	39.7%	1	1.7%	0	0.0%	0	0.0%	20	34.5%	3	5.2%	58
	Spring 2004	0	0.0%	0	0.0%	0	0.0%	0	0.0%	0	0.0%	0	0.0%	0	0.0%	0	0.0%	0	0.0%	0
	Spring 2003	15	3.2%	40	8.5%	9	1.9%	154	32.8%	10	2.1%	1	0.2%	2	0.4%	222	47.2%	17	3.6%	470
	Spring 2002	16	2.7%	46	7.8%	13	2.2%	209	35.2%	12	2.0%	0	0.0%	0	0.0%	280	47.2%	17	2.9%	593
	Spring 2001	17	2.7%	50	7.9%	12	1.9%	201	31.9%	9	1.4%	0	0.0%	1	0.2%	325	51.5%	16	2.5%	631
Stockdale	Spring 2010	26	3.9%	51	7.6%	17	2.5%	222	33.2%	6	0.9%	0	0.0%	1	0.1%	268	40.1%	77	11.5%	668
	Spring 2009	39	3.8%	99	9.6%	21	2.0%	383	37.3%	12	1.2%	0	0.0%	3	0.3%	406	39.6%	63	6.1%	1,026
	Spring 2008	36	3.9%	72	7.7%	19	2.0%	363	38.9%	10	1.1%	0	0.0%	7	0.8%	375	40.2%	50	5.4%	932
	Spring 2007	32	4.1%	45	5.7%	18	2.3%	313	39.7%	14	1.8%	0	0.0%	5	0.6%	318	40.4%	43	5.5%	788
	Spring 2006	26	4.0%	39	6.0%	8	1.2%	248	38.0%	8	1.2%	0	0.0%	0	0.0%	299	45.8%	25	3.8%	653
	no data	0	0.0%	0	0.0%	0	0.0%	0	0.0%	0	0.0%	0	0.0%	0	0.0%	0	0.0%	0	0.0%	0
Tehachapi	no data	0	0.0%	0	0.0%	0	0.0%	0	0.0%	0	0.0%	0	0.0%	0	0.0%	0	0.0%	0	0.0%	0
	Spring 2004	1	1.9%	2	3.8%	0	0.0%	15	28.3%	2	3.8%	0	0.0%	0	0.0%	28	52.8%	5	9.4%	53
	Spring 2003	1	1.2%	1	1.2%	1	1.2%	13	15.9%	2	2.4%	0	0.0%	0	0.0%	60	73.2%	4	4.9%	82
	Spring 2002	2	1.3%	3	1.9%	1	0.6%	33	21.0%	3	1.9%	0	0.0%	0	0.0%	108	68.8%	7	4.5%	157
	Spring 2001	0	0.0%	2	1.4%	0	0.0%	27	19.3%	1	0.7%	0	0.0%	0	0.0%	102	72.9%	8	5.7%	140
Weekend	Spring 2010	6	1.2%	37	7.3%	4	0.8%	236	46.8%	5	1.0%	0	0.0%	0	0.0%	135	26.8%	81	16.1%	504
	Spring 2009	17	4.2%	31	7.7%	9	2.2%	196	48.5%	4	1.0%	0	0.0%	2	0.5%	116	28.7%	29	7.2%	404
	Spring 2008	13	2.8%	41	8.9%	9	1.9%	231	49.9%	3	0.6%	0	0.0%	3	0.6%	137	29.6%	26	5.6%	463
	Spring 2007	13	3.4%	26	6.8%	5	1.3%	199	51.7%	8	2.1%	0	0.0%	1	0.3%	119	30.9%	14	3.6%	385
	Spring 2006	7	2.5%	28	10.1%	3	1.1%	160	58.0%	0	0.0%	0	0.0%	1	0.4%	64	23.2%	13	4.7%	276
	Spring 2005	9	2.5%	29	8.0%	6	1.7%	197	54.3%	7	1.9%	1	0.3%	0	0.0%	103	28.4%	11	3.0%	363
	Spring 2004	11	2.7%	31	7.6%	8	2.0%	204	50.2%	5	1.2%	0	0.0%	0	0.0%	133	32.8%	14	3.4%	406
	Spring 2003	15	3.5%	41	9.7%	9	2.1%	194	45.9%	5	1.2%	0	0.0%	2	0.5%	143	33.8%	14	3.3%	423
	Spring 2002	8	1.6%	48	9.5%	14	2.8%	196	38.8%	11	2.2%	0	0.0%	2	0.4%	205	40.6%	21	4.2%	505
	Spring 2001	8	1.8%	48	11.1%	7	1.6%	177	40.8%	10	2.3%	0	0.0%	0	0.0%	164	37.8%	20	4.6%	434
Weill	Spring 2010	7	2.0%	26	7.3%	13	3.7%	111	31.2%	7	2.0%	0	0.0%	0	0.0%	144	40.4%	48	13.5%	356
	Spring 2009	9	2.1%	38	8.8%	14	3.2%	138	31.9%	11	2.5%	0	0.0%	2	0.5%	190	44.0%	30	6.9%	432
	Spring 2008	5	1.5%	32	9.4%	5	1.5%	119	34.8%	4	1.2%	0	0.0%	0	0.0%	155	45.3%	22	6.4%	342
	Spring 2007	6	2.5%	13	5.4%	1	0.4%	105	43.9%	3	1.3%	0	0.0%	0	0.0%	98	41.0%	13	5.4%	239
	Spring 2006	13	3.1%	28	6.6%	12	2.8%	166	39.2%	7	1.7%	0	0.0%	2	0.5%	184	43.4%	12	2.8%	424
	Spring 2005	0	0.0%	0	0.0%	0	0.0%	0	0.0%	0	0.0%	0	0.0%	0	0.0%	0	0.0%	0	0.0%	0
	Spring 2004	11	2.8%	38	9.6%	4	1.0%	156	39.6%	7	1.8%	0	0.0%	1	0.3%	165	41.9%	12	3.0%	394
	Spring 2003	8	1.6%	57	11.7%	4	0.8%	190	38.9%	8	1.6%	0	0.0%	1	0.2%	208	42.5%	13	2.7%	489
	Spring 2002	7	1.7%	34	8.3%	3	0.7%	138	33.7%	17	4.1%	0	0.0%	0	0.0%	194	47.3%	17	4.1%	410
	Spring 2001	7	1.7%	46	10.9%	5	1.2%	140	33.2%	11	2.6%	0	0.0%	1	0.2%	190	45.0%	22	5.2%	422